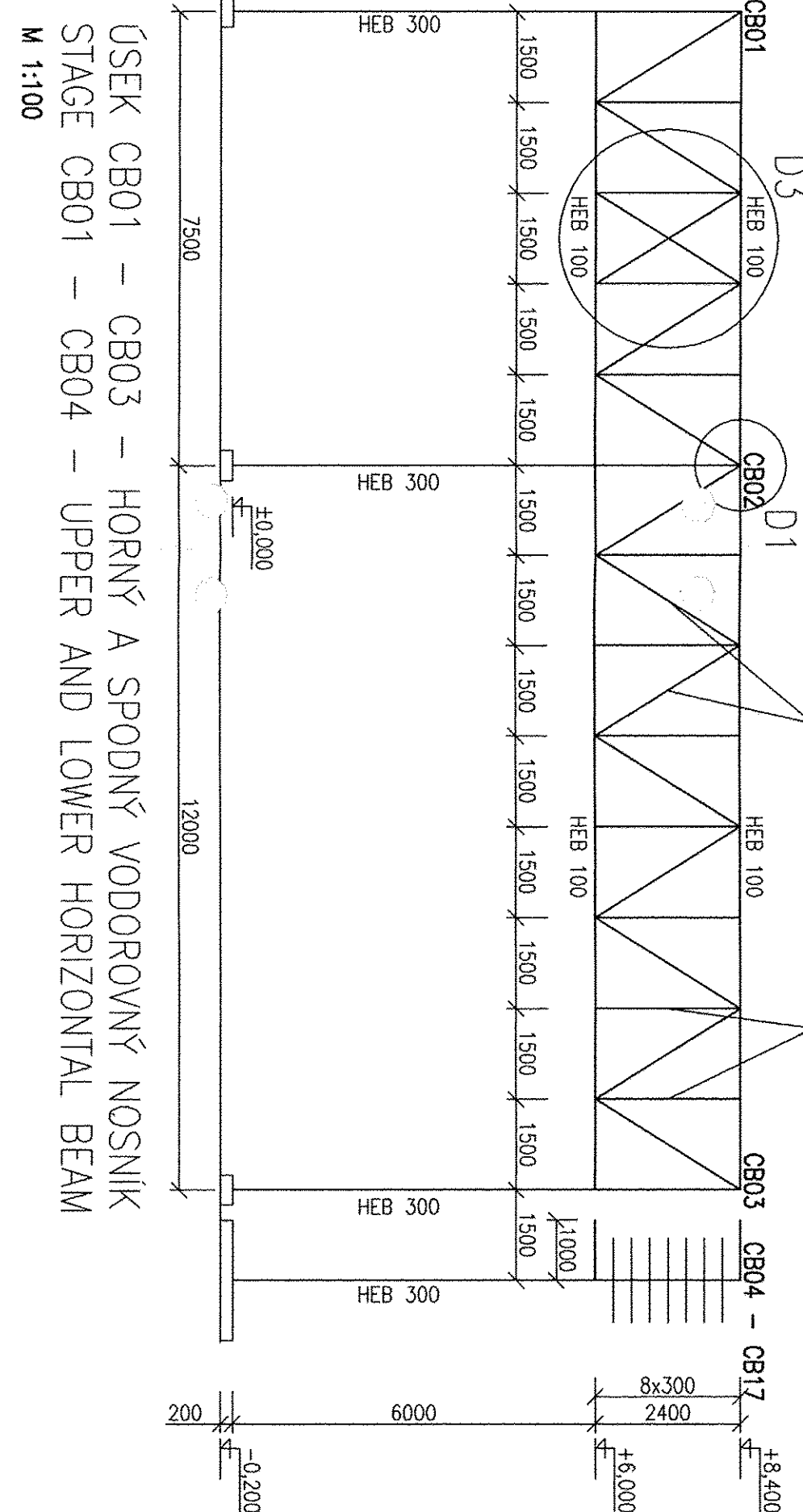
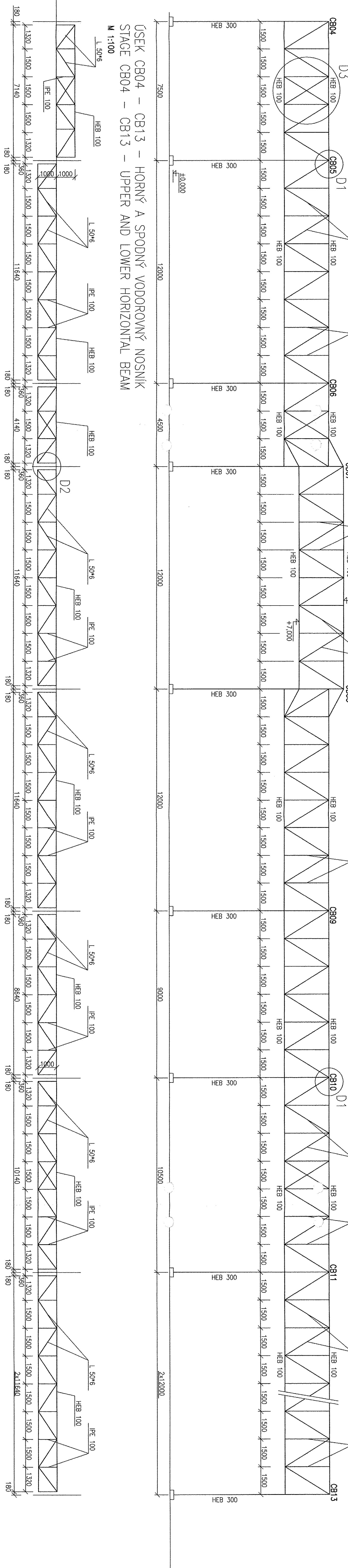


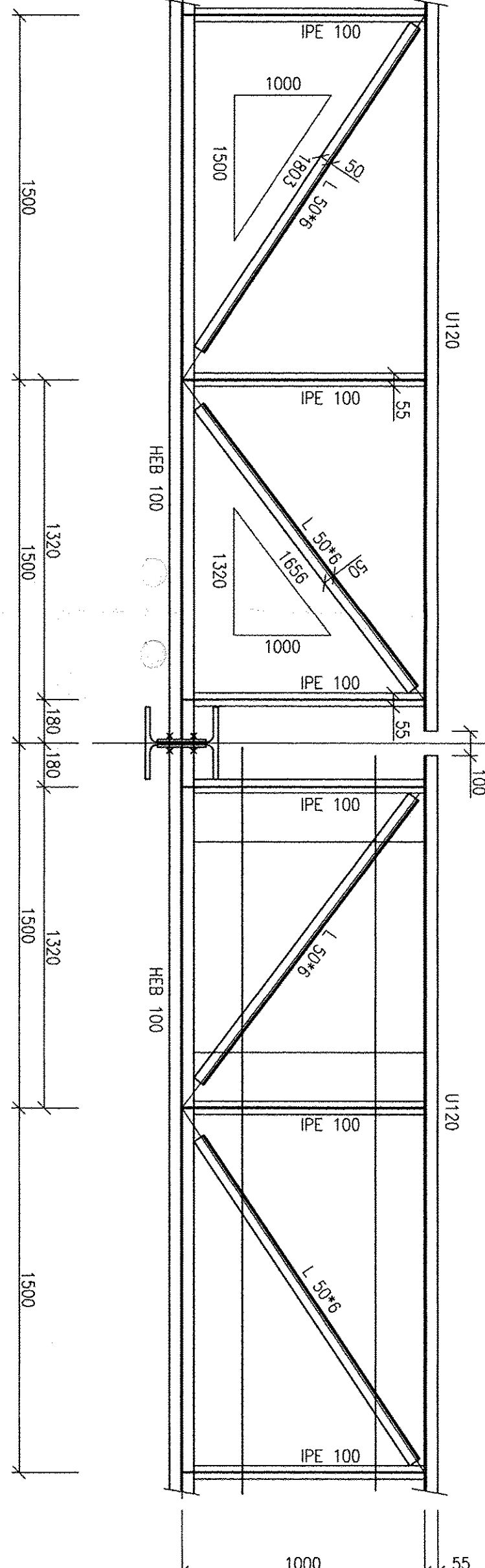
## M 1:100



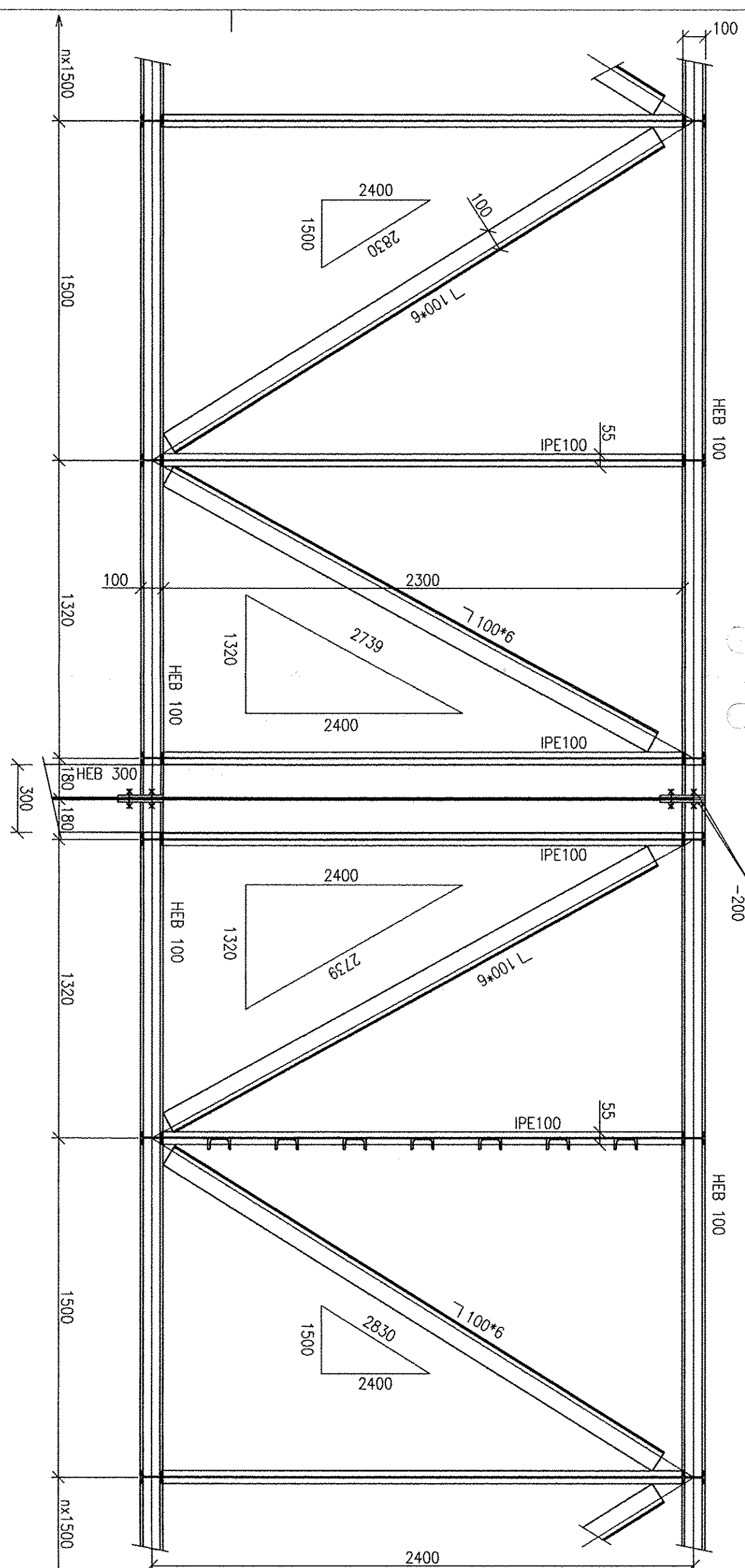
## M 1:100



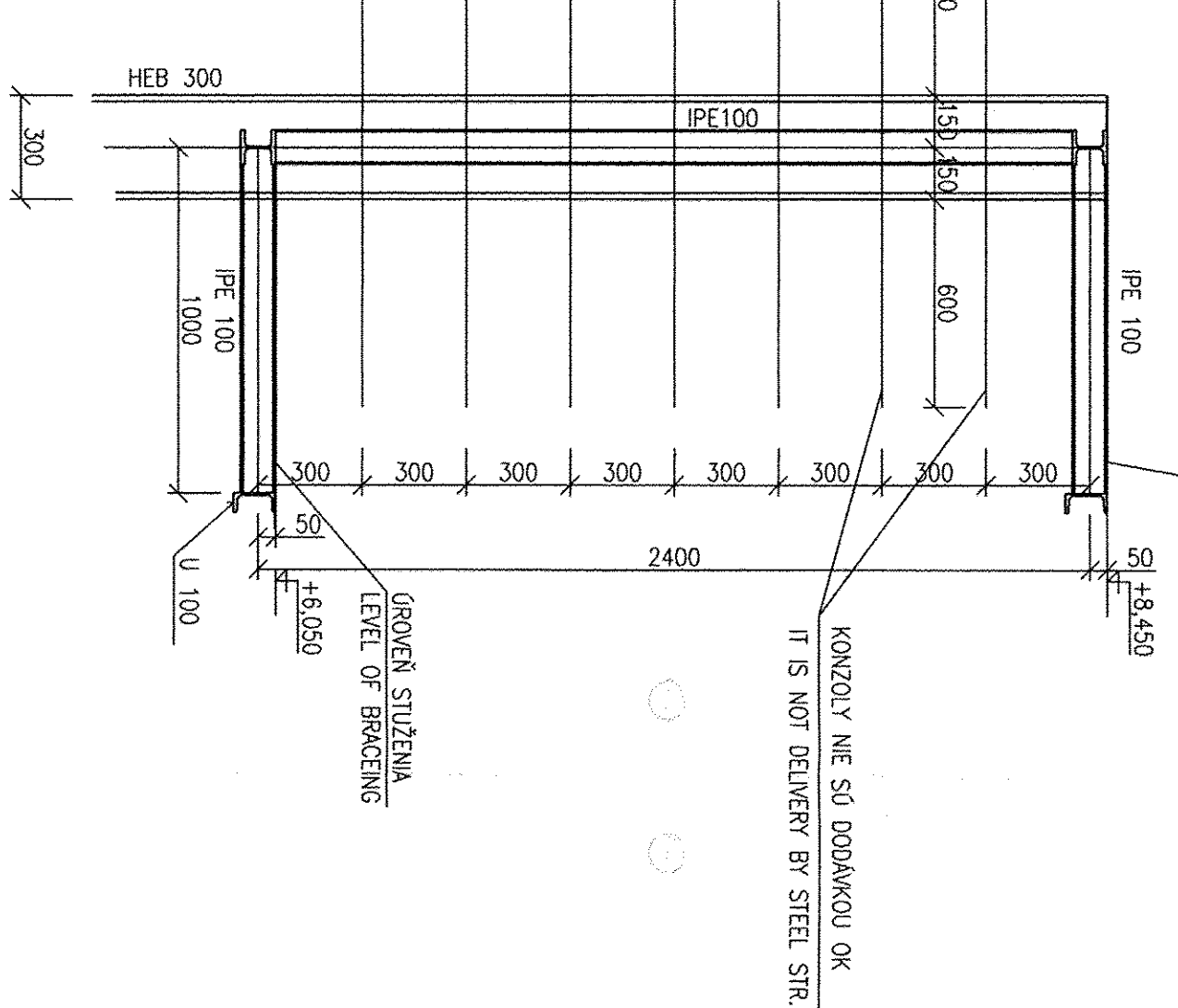
DETAIL D2  
DETAIL D2  
M 1:20



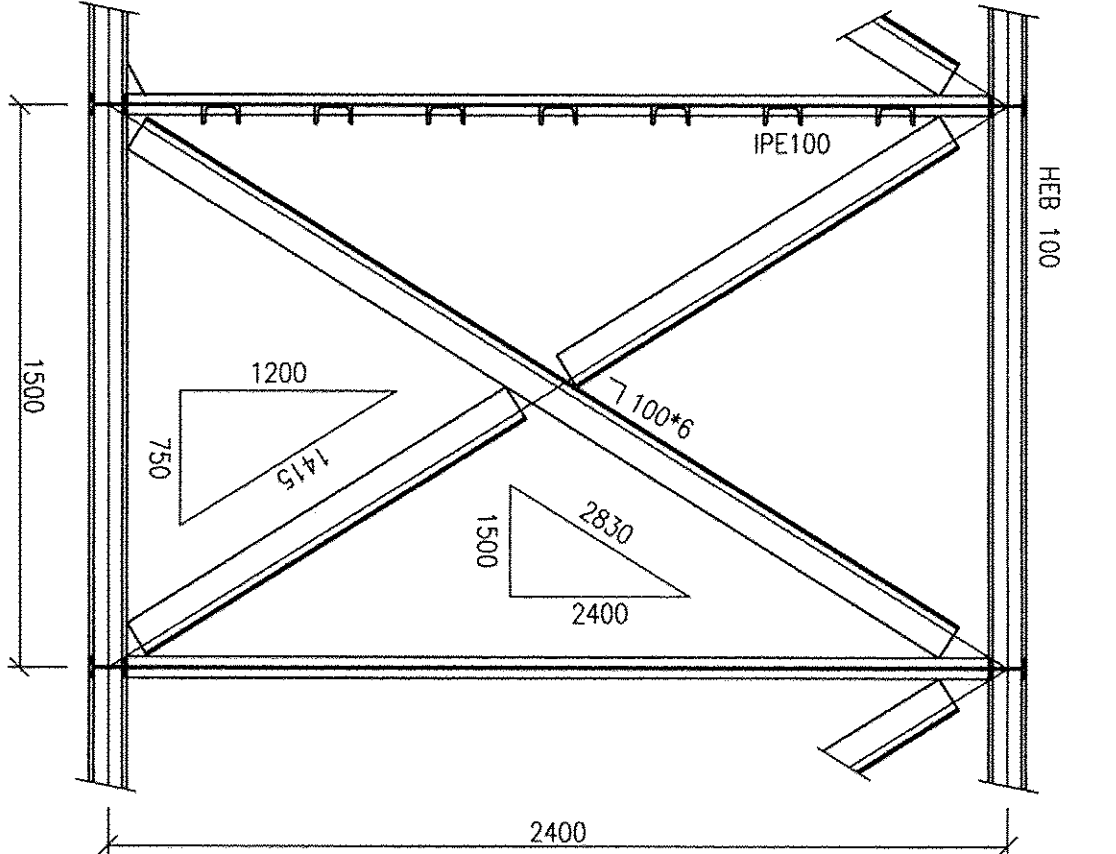
DETAIL D1  
DETAIL D1  
M 1:20



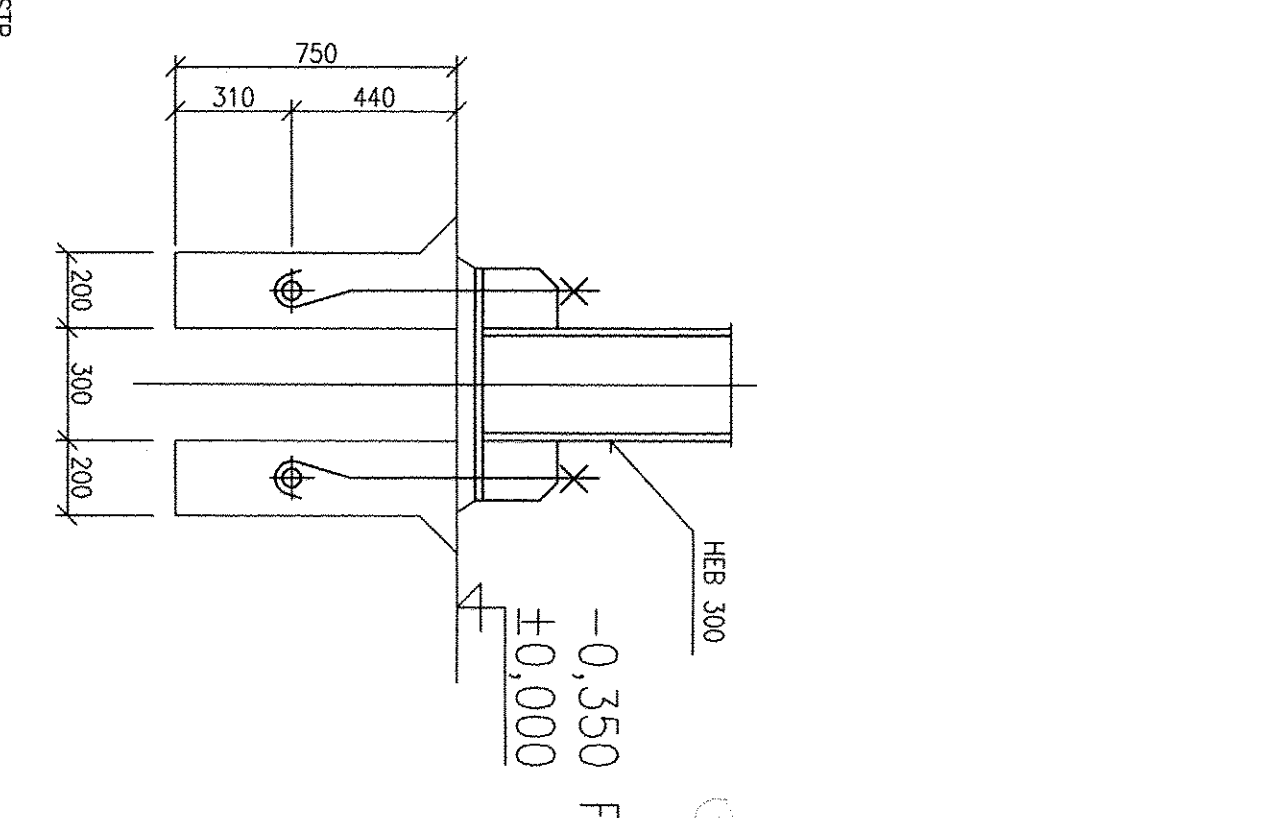
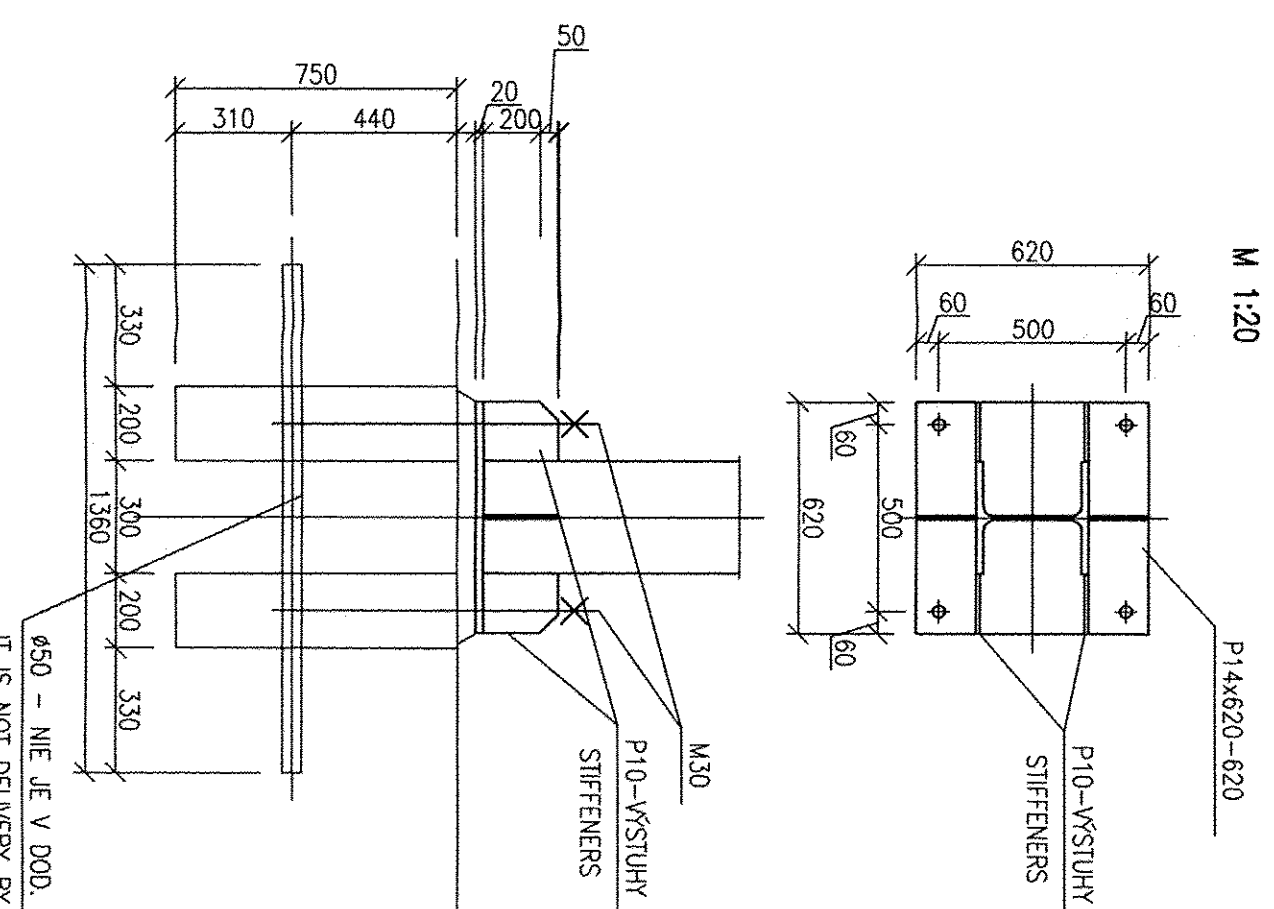
TYPICKÝ REZ  
TYPICAL SECTION  
M 1:20



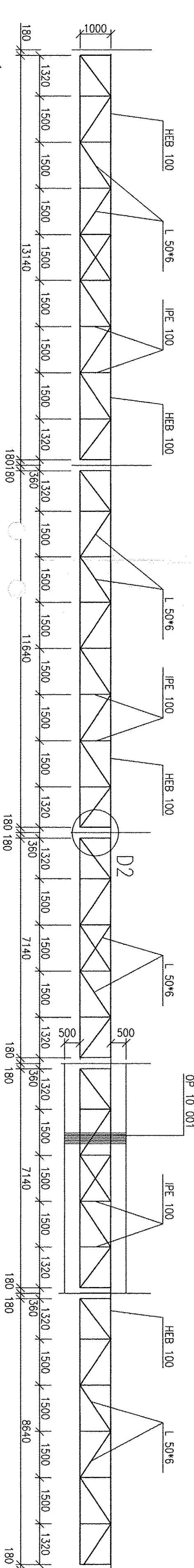
DETAIL D3  
DETAIL D3  
M 1:20



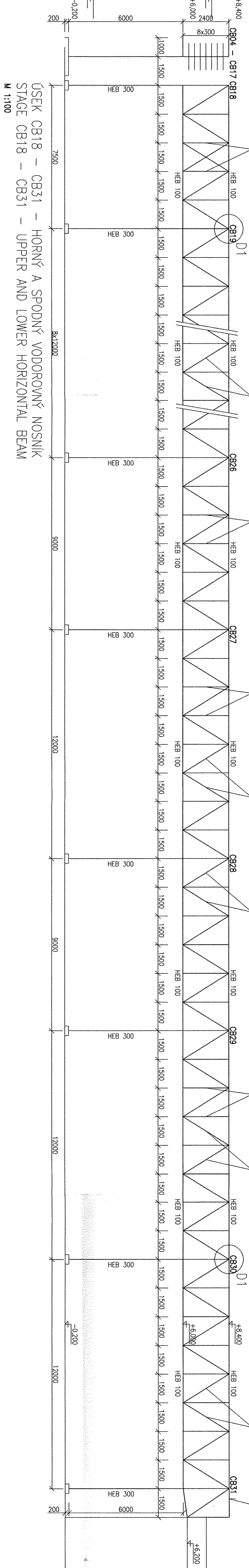
## KOTVENIE STĽPOV ANCHORAGE



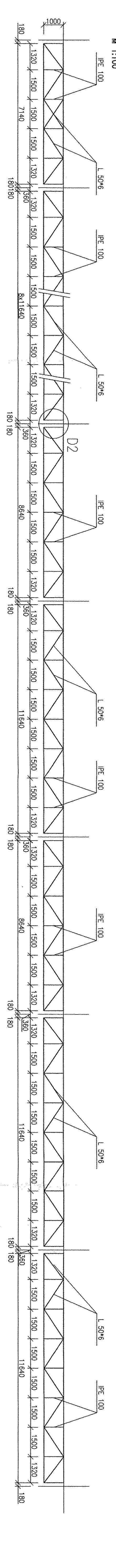
ÚSEK CB13 - CB17 - HORNÝ A SPODNÝ VODOROVNÝ NOSNÍK  
STAGE CB13 - CB17 - UPPER AND LOWER HORIZONTAL BEA



COLLA CB18 - CB31  
STAGE CB18 - CB31  
M 1:100  $\overline{\text{PE } 100}$



USEK CB18 - CB31 - HORNY A SPOJNY VODKOVÝ NOS  
STAGE CB18 - CB31 - UPPER AND LOWER HORIZONTAL BE  
W 1-100



## POZNÁMKY:

3. HORŤA HRAŤA ZAKLADOVE PATKY PRE CB24 AŽ CB29 BUDE  $-0,350 = +224,800$

ANIMATION:

## APPENDIX A

3. MANUFACTURAL BAND 8 POOLA STN 73 26 01 0250 = 1294.800  
2. UPPER EDGE OF EQUIVATION 520 0014

3. OFFER CURE OF FOUNDATION FOR CBZ = CBZ = 628,000.00  
2,224,000.00

2. 9870

$$= 0,000 = 225,150 \text{ m.n.m}$$

PRACOVANÉ POD ZAKAZOVÝM ČÍSLOM:158/2004/50/

**REFLEX-PRO**  
vol. 5 r.o.

DATE: 2007-08-20		
Date :	2007-08-20	Checked:
Name :	A	

08/ 2005	A	ING. SOBOTA	ING. RAČEK
----------	---	-------------	------------

Job code:	1
-----------	---

Air Liquide AGS GmbH	Reference: ASU No.9 KOSICE	Sheet
TILKÝREI OVÝ MOST /CABLE BRIDGE		Drawing

Replaces: 79-----  
Replaced by: 79-----

MUSKIE CABLE BRIDGE  
OCEANOGRAPHY CONSTRUCTION STRUCTURE  
RESEARCH CENTER FOR ADVANCED ZOOLOGY