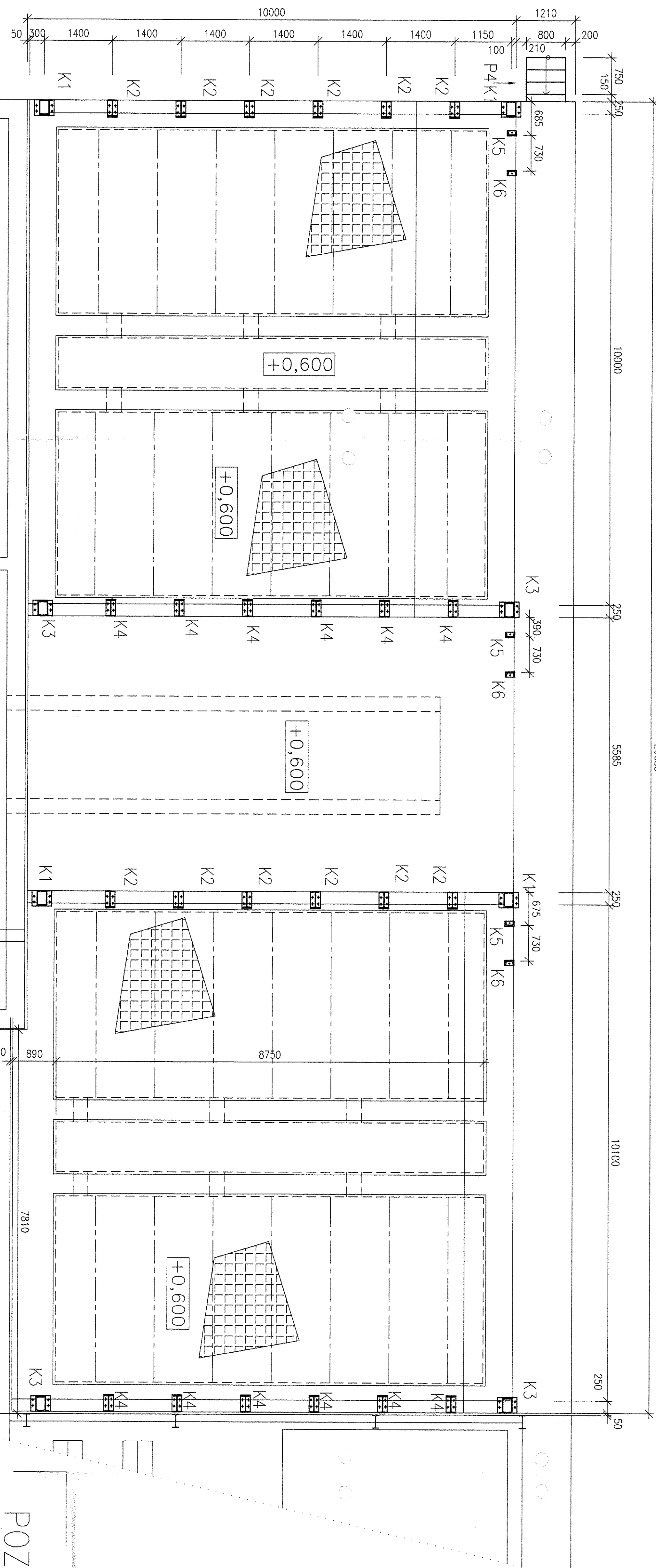


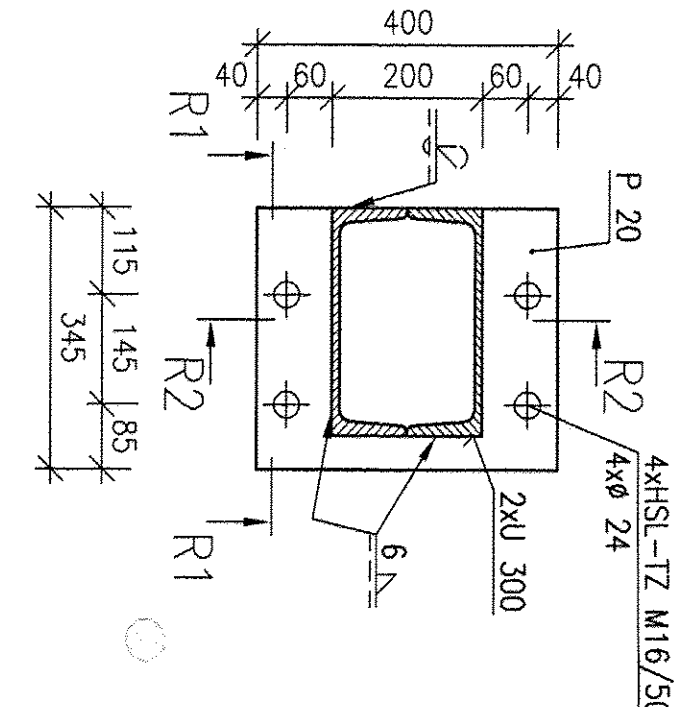
PŌDORYS KOTVENIA/ANCHORING

M 1:50



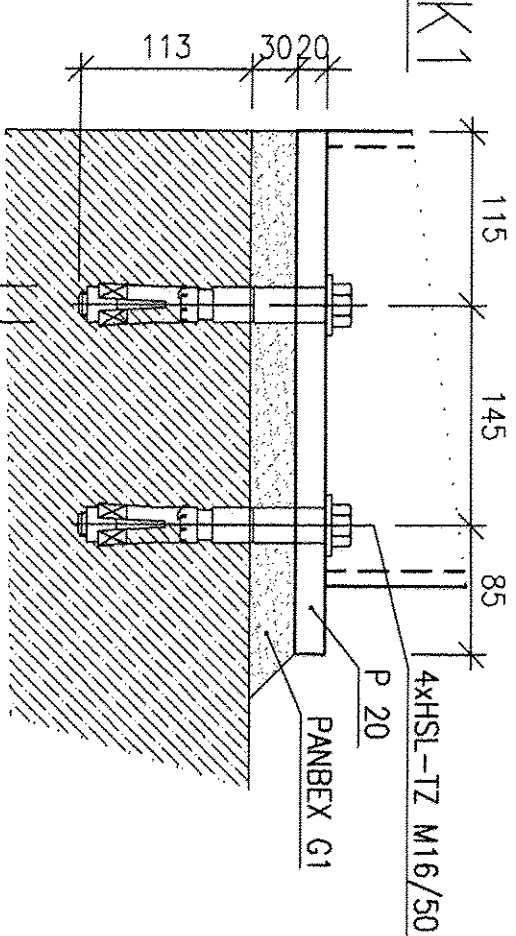
KOTVENIE/ANCHORING K1

M 1:10



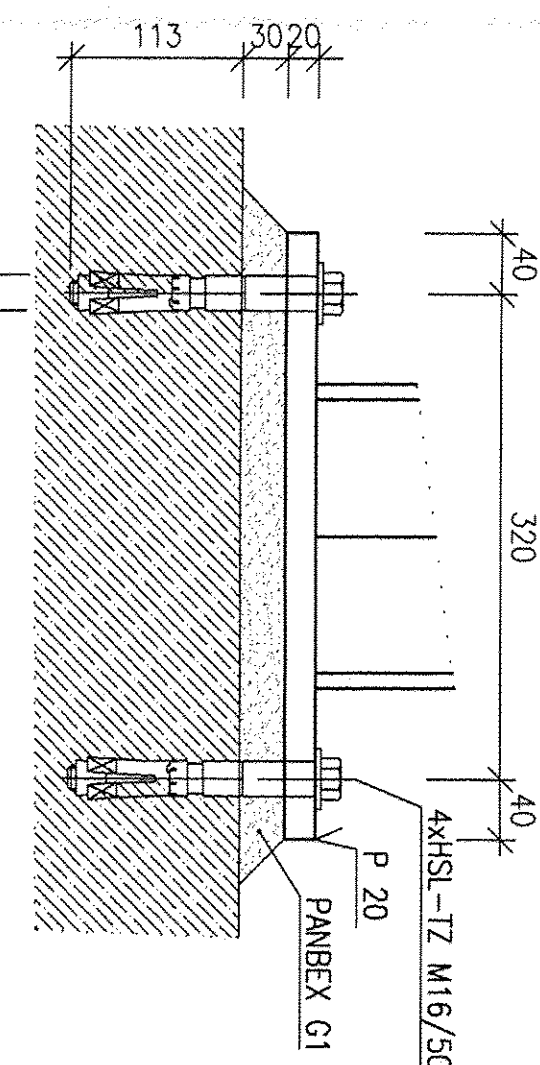
REZ/SECTION R1-R1

M 1:5



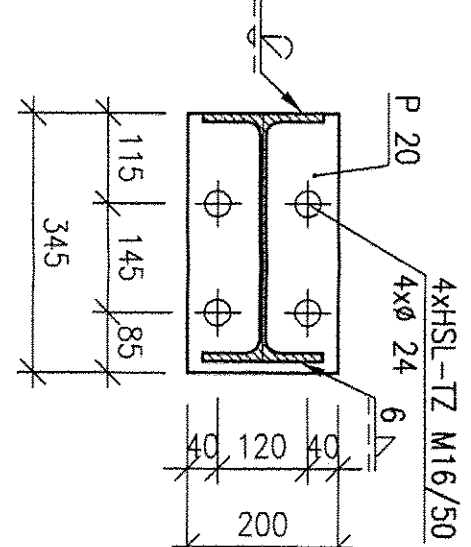
REZ/SECTION R2-R2

M 1:5



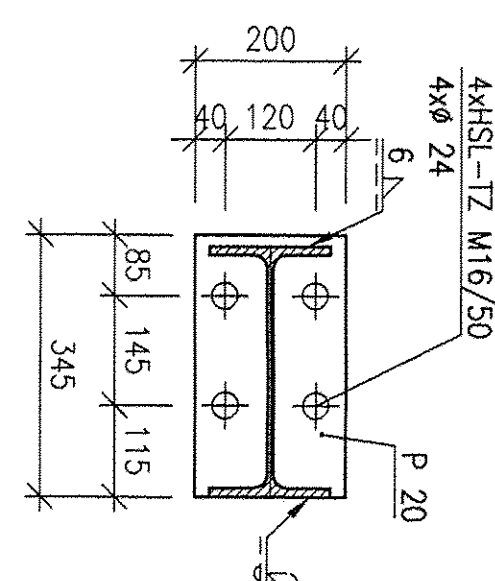
KOTVENIE/ANCHORING K2

M 1:10



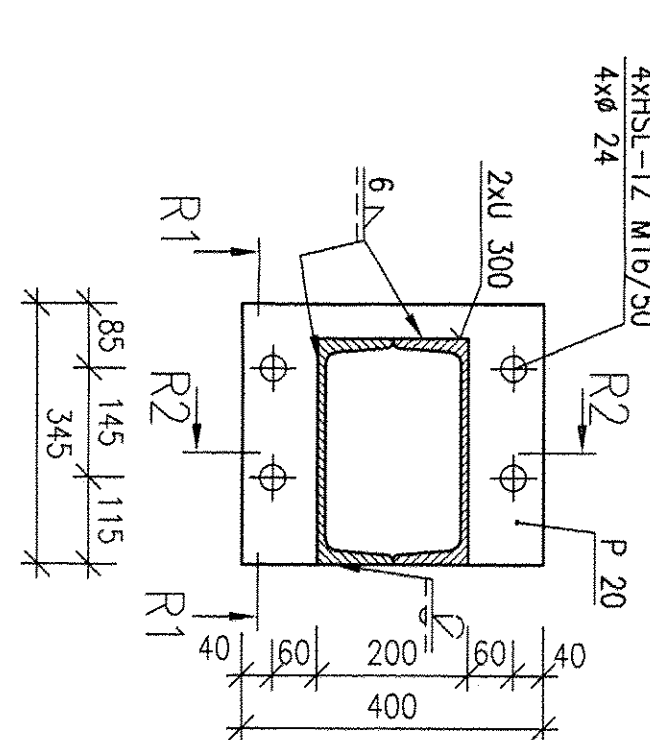
KOTVENIE/ANCHORING K4

M 1:10



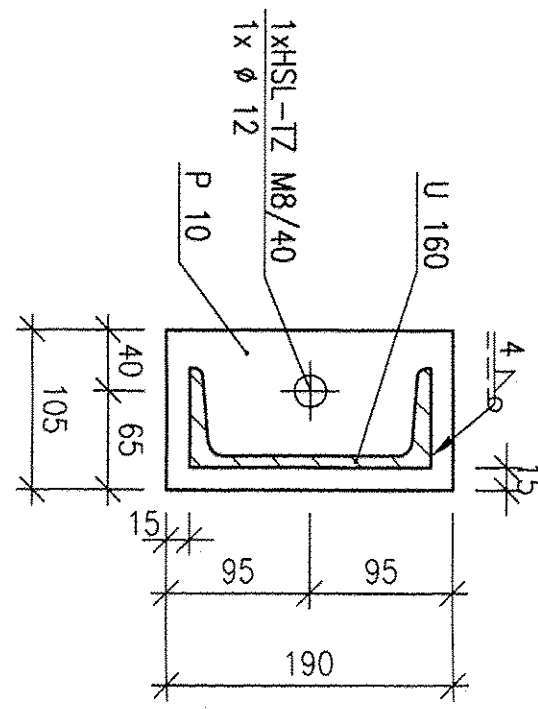
KOTVENIE/ANCHORING K3

M 1:10



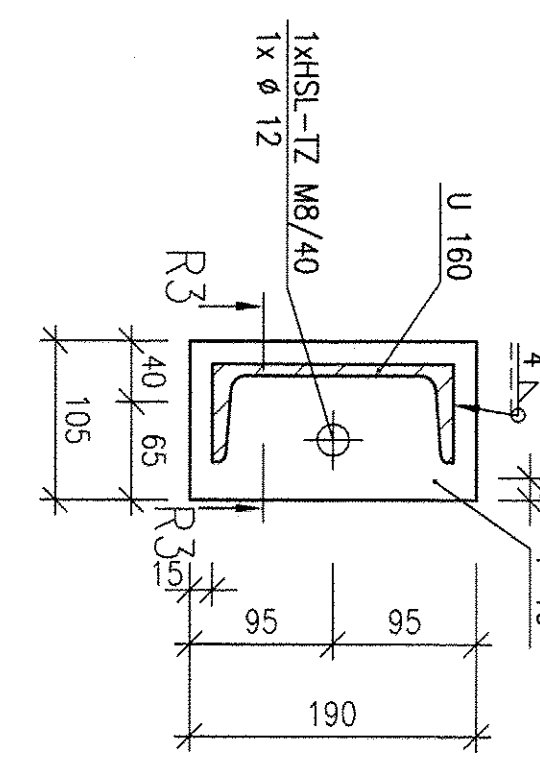
KOTVENIE/ANCHORING K5

M 1:5



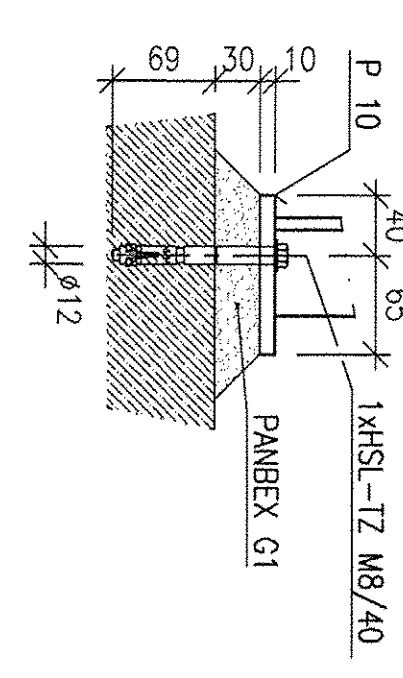
KOTVENIE/ANCHORING K6

M 1:5



REZ R3-R3

M 1:5



POZNÁMKY - NOTES

- 1) KOTVENÉ SKRUTKY HILTI HSL-TZ M16/50 VID KATALÓG VÝROBKOV HILTI STR.6/35-6/36. HLBAKA VRTANIA 125 mm. ÚŤAHOVACÍ MOMENT 120 Nm.
- 2) KOTVENÉ SKRUTKY HILTI HSL-TZ M8/40 VID KATALÓG VÝROBKOV HILTI STR.6/35-6/36. HLBAKA VRTANIA 80 mm. ÚŤAHOVACÍ MOMENT 25 Nm.

PREPARED FOR CONSTRUCTION

Re 19.07.05

REFREPO		AIR LIQUIDE	
Job code:	K 70101	Checked:	History file:
Date:	15.07.2005	Name:	INSTRUKTOR
Reference:	ASU No.9 KOSICE	Scale:	Original format:
Title:	PROJEKT KOTVENIA/ANCHORING	Sheet:	of
Replaces:	79	Drawing No.:	792.87683
Replaced by:	79	Rev.:	0

