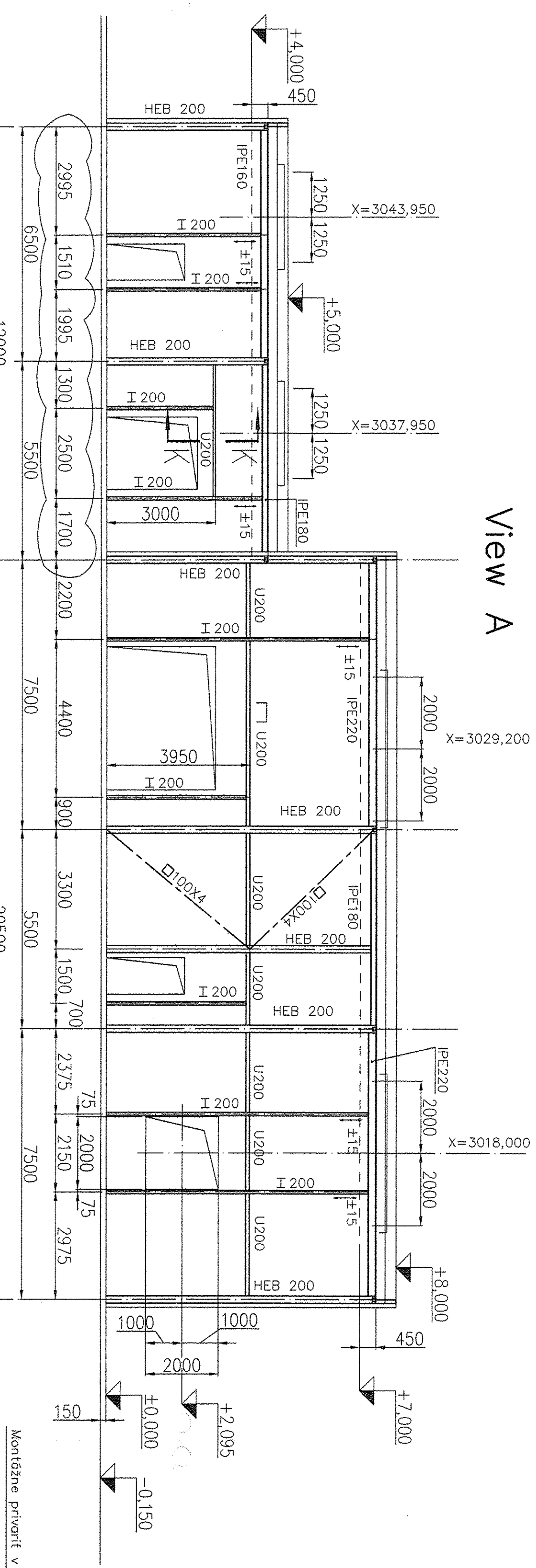
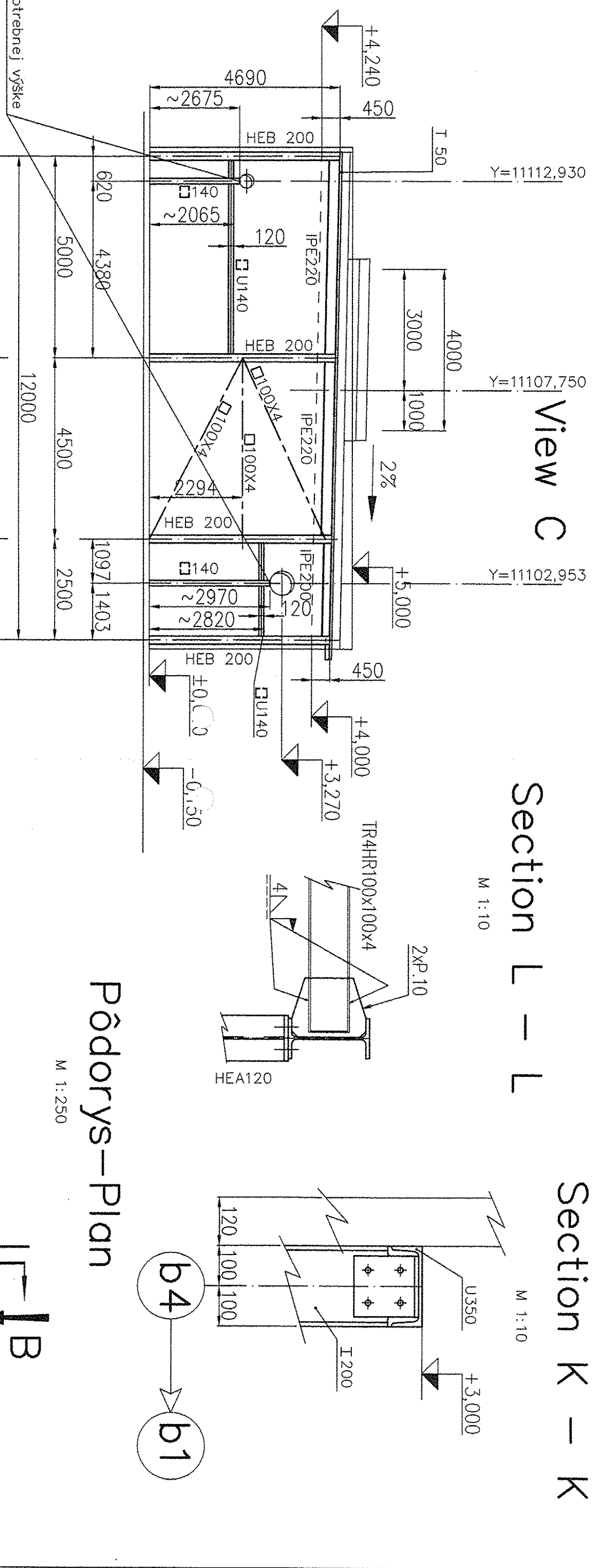


View A



View C



Section L - L

M 1:10

Section K - K

M 1:10

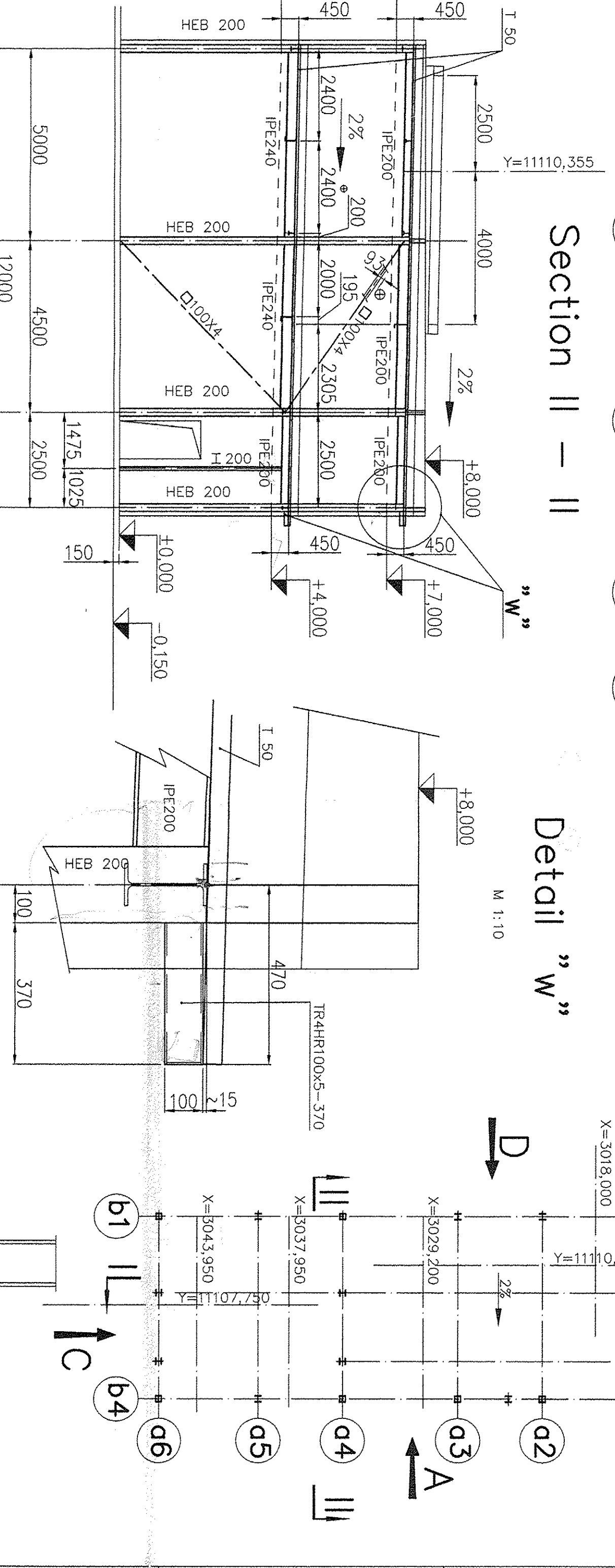
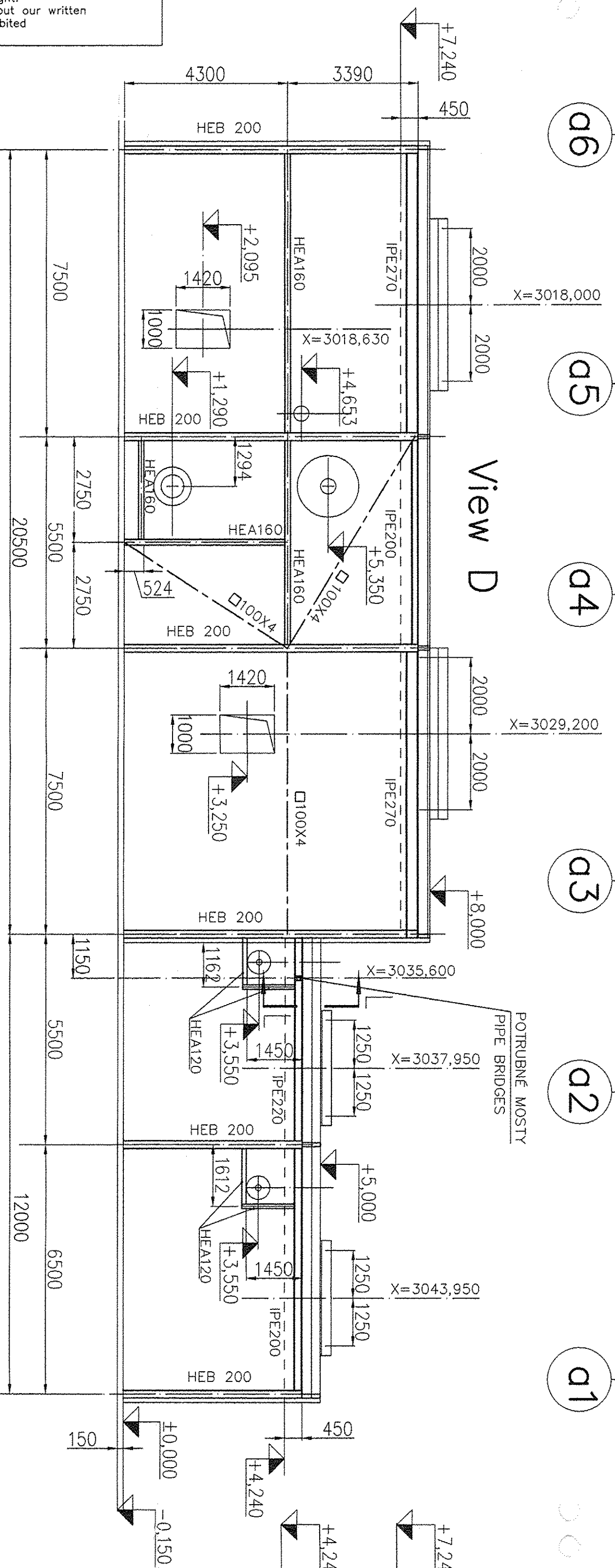
Pôdorys-Plan

M 1:250

Section II - II

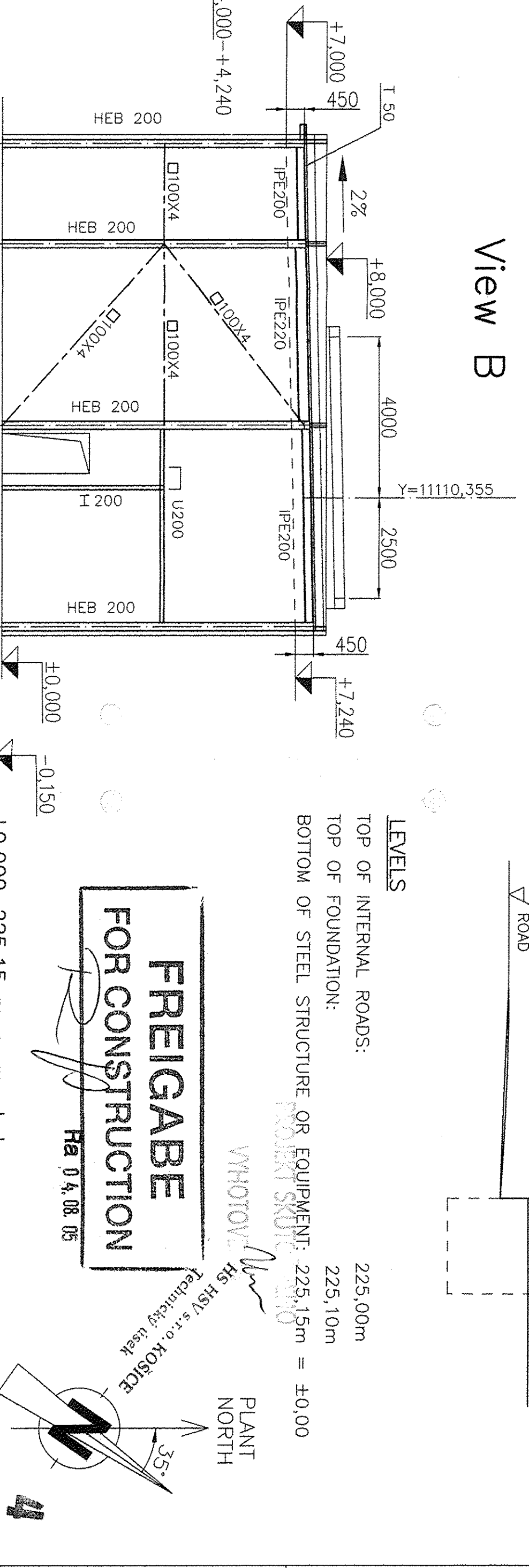
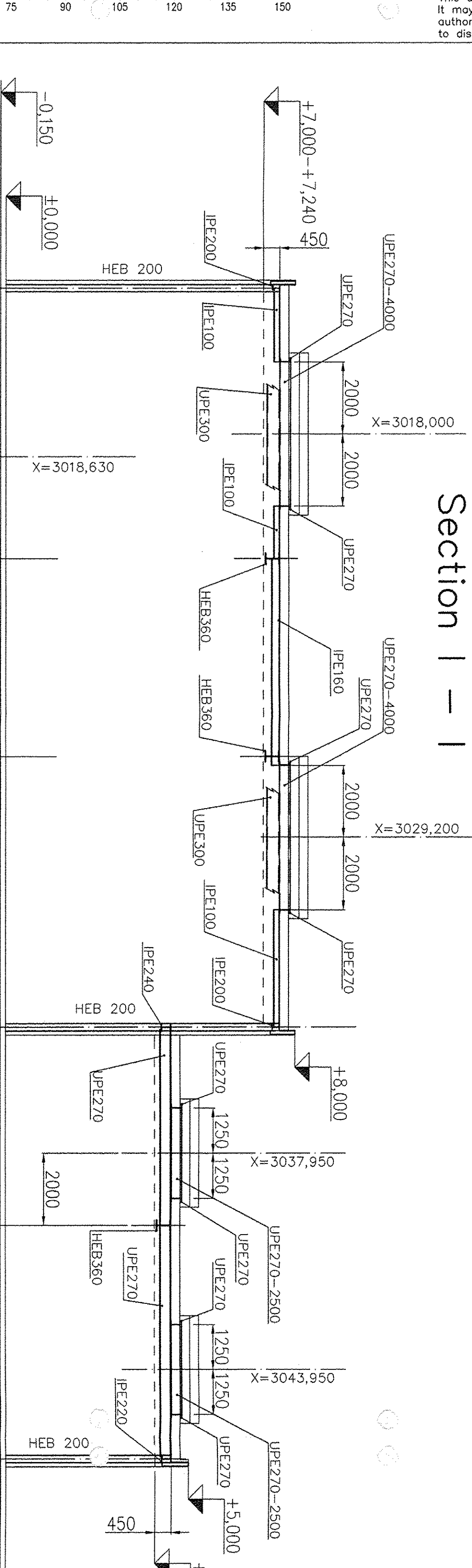
Detail "w"

M 1:10



Section I - I

View B



HPK engineering a.s.

PROJEKT PRE REALIZACIU STAVBY POD Z. č. 3821.2.002.0K-02

±0.000=225,15 m. n. m. Jodran

LEVELS

TOP OF INTERNAL ROADS: 225,00m

TOP OF FOUNDATION: 225,10m

BOTTOM OF STEEL STRUCTURE OR EQUIPMENT: 225,15m = ±0,00

PLANT NORTH

REPLACES: 79

REPLACED BY: 79

REV	DATE	NAME	CHECKED	HISTORY FILE
A	03.08.2005	ING. DUBRAVKA	ING. PAVEL	
B	25.07.2005	ING. DUBRAVKA	ING. PAVEL	
C	14.02.2005	ING. DUBRAVKA	ING. PAVEL	

JOB CODE: K70101

REFERENCE: ASU No.9 KOŠICE

TITLE: UNIT 1 - COMPRESSOR BUILDING

DRAWING NO.: 792.87450

SHEET: 001 OF 002 SHEETS

SCALE: 1:100 ORIGINAL FORMAT: A4