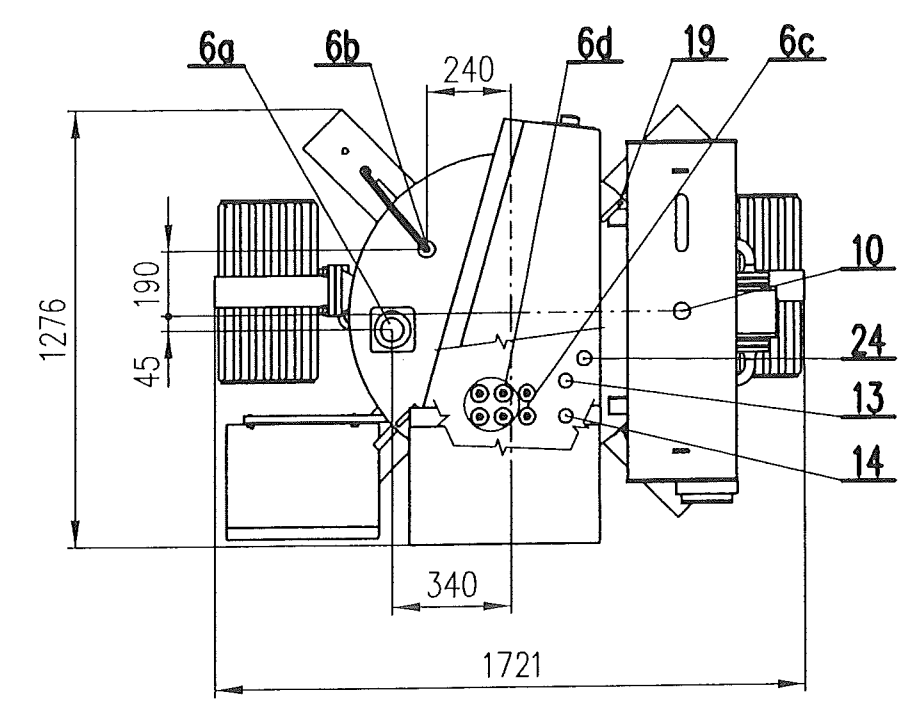
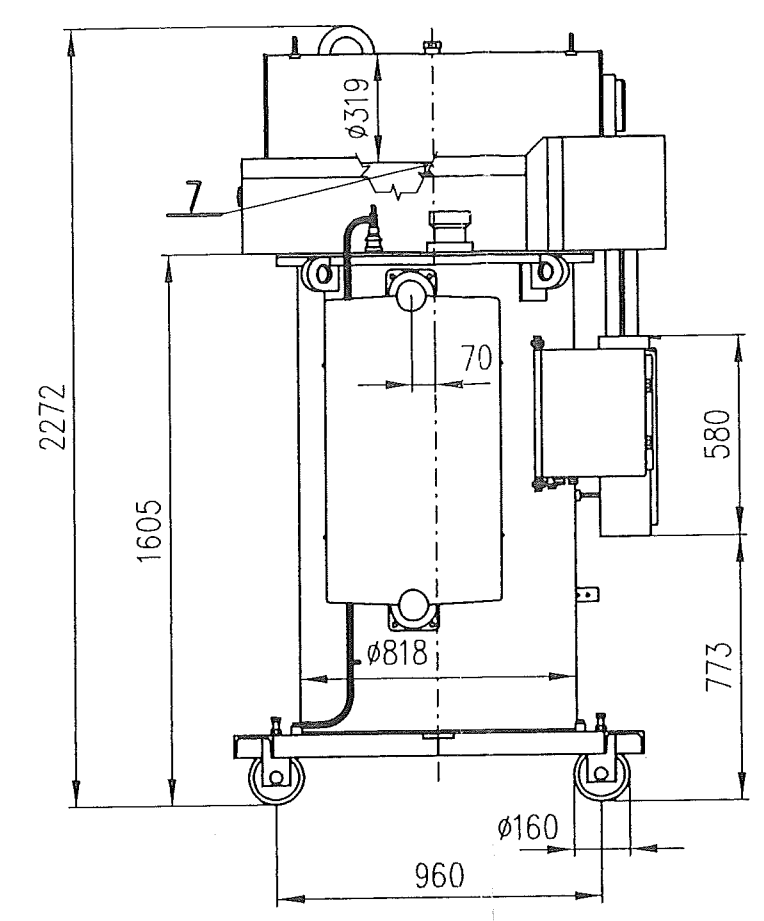
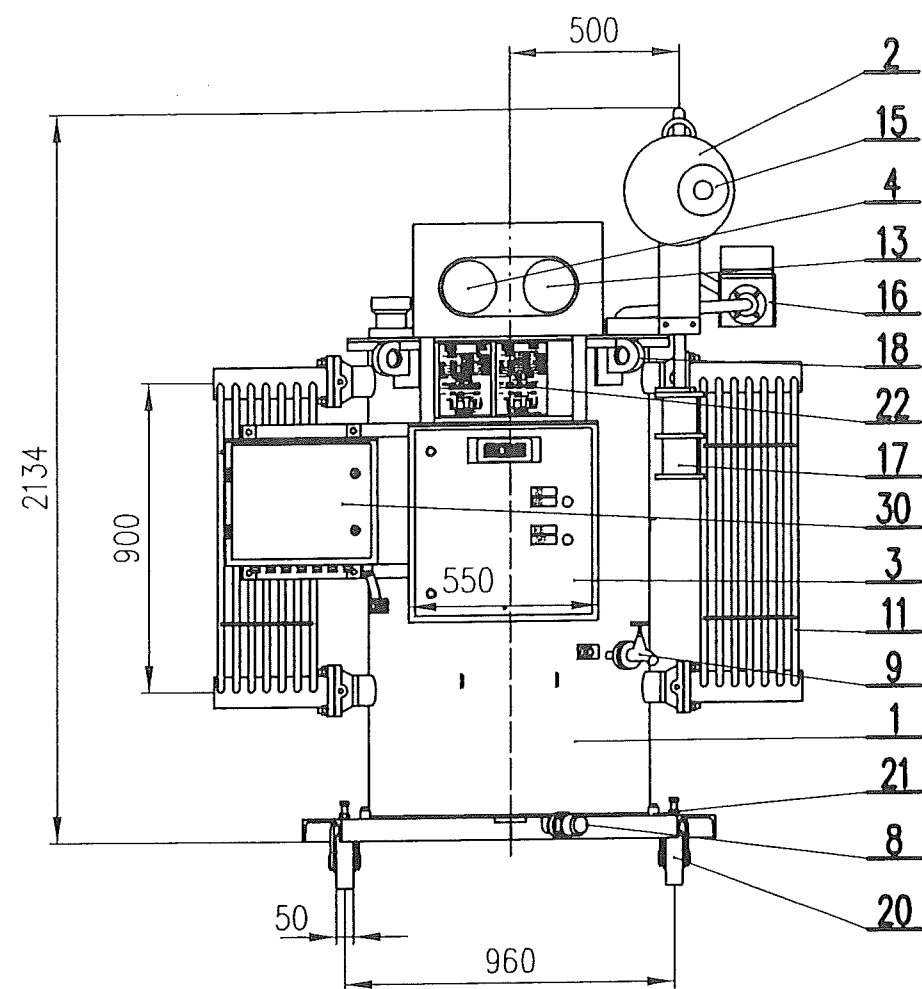
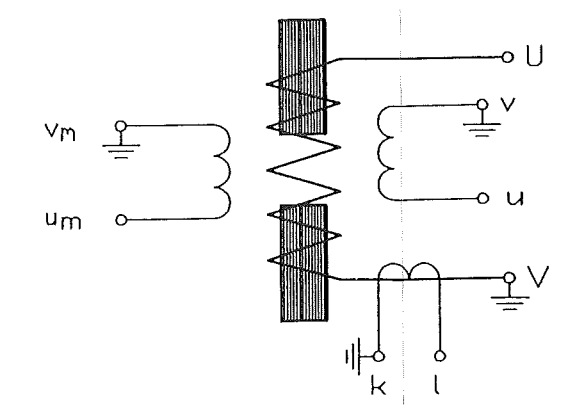


1		2		3		4		5		6		7		8		
EQUIPMENT																
A B C D E	Mark.	Name of part										Amount				
	1	Tank										1				
	2	Conservator										1				
	3	Motor drive unit MD-1 EGE										1				
	4	Position indicator										1				
	6a	Bushing U – CONNEX , 250A PFISTERER										1				
	6b	Bushing V – DT 250 DIN 42530										1				
	6c	Bushings u, v – DT 250 DIN 42530										2				
	6d	Bushings k, l, um, vm – DT 250 DIN 42530										4				
	7	Oil draining valve OR22 DIN 42551										1				
	8	Oil draining valve OR31 DIN 42551										1				
	9	Oil sampling valve – DN15 DIN 42568										1				
	10	Filling neck – D DIN 42553										1				
	11	Radiators DIN 42559										2				
	13	Microswitch remote thermometer – MTA F100 MESSKO										1				
	14	Resistance thermometer Pt100 RÖSSEL										1				
	15	Oil level indicator Qualitrol										1				
	16	Buchholz relay – BF25/10 EMB BARLEBEN										1				
17	Dehydrating breather – L1 MAIER DIN 42562										1					
18	Lifting lug of complete unit										4					
A B C D E F	Mark.	Name of part										Amount				
	19	Lifting lug of outlift part										2				
	20	Wheels D160										4				
	21	Earthing terminal – B-M12 DIN 48088										4				
	22	Rating and connection diagram plate DIN 57532										1				
	24	Thermometer case DIN 42554										1				
	30	Box for REG-DP										1				
		Other equipment - potentiometer 2x200 Ohm - terminals of power auxiliary winding are placed in the control box														
	NR.		MODIFICATION		DATE		NAME		ORIGINAL		REPLACEMENT		EQUIPMENT		E500020	
	1		2		3		4		5		6		7		8	
				US STEEL KOŠICE 50. 3023 01 6,3 kV SUBSTATION T80		AREVA						025.011551-6502		SHEET 2 4		



Wiring diagram:



NR.	MODIFICATION	DATE	14.3.2005	US STEEL KOŠICE	AREVA	DIMENSIONAL DRAWING	E500020	SHEET 3
		DRAWN	Gazda	50. 3023 01				
		VERIFIED	Maňhal	6,3 kV SUBSTATION T80				
ORIGINAL				REPLACEMENT			025.011551-6502	4



EGE spol. s r.o.
Novohradská 34
České Budějovice

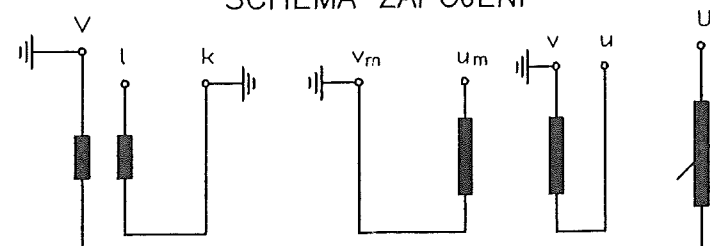
ZHÁŠECÍ TLUMIVKA S PLYNULOU REGULACÍ

TYP	ZTC 250	VÝR.Č.	6213	VDE	0532
CELK.HMOTNOST t		2,20		ART.	ESp
JMENOVITÉ NAPĚTÍ kV	3,64	HMOTNOST OLEJE t	0,57	ROK VÝR.	2005
KMITOČET Hz	50	HMOTNOST VÝJM.DÍLU t	0,54	CHLAZENÍ	ONAN
JMENOVITÝ VÝKON kVAr	400	JM.PROUD A	10-110	DOBA ZATÍŽ.	24h
JMENOVITÝ VÝKON kVAr	-	JM.PROUD A	-	DOBA ZATÍŽ.	2h
IMPEDANCE _{24h} Ω	331-33,1	IMPEDANCE _{2h} Ω	-	U _m kV	7,2
POHON PRO REGULACI kW	1,5	230/400 V st			

SEKUNDÁRNÍ VINUTÍ

SVORKY	NAPĚTÍ	PROUD	VÝKON	DOBA ZATÍŽ.
u - v	V 500 ±10%	A 80	kVA 40	90s
u _m - v _m	V 100 ±10%	A 10	VA 1000	24h
k - l	A 100/1	VA 30	TŘÍDA	1FS5

SCHEMA ZAPOJENÍ



U - V Hlavní vinutí
u - v Výkonové pomocné vinutí
u_m - v_m Měřicí pomocné vinutí
k - l Sekundární svorky proudového transformátoru

		DATE	14.3.2005
		DRAWN	Gazda
		VERIFIED	Maňhal
NR.	MODIFICATION	DATE	NAME

US STEEL KOŠICE	ORIGINAL
50. 3023 01	REPLACEMENT
6,3 kV SUBSTATION T80	

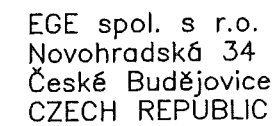


RATING PLATE

E500020

025.011551-6502

SHEET 4.1.1
4



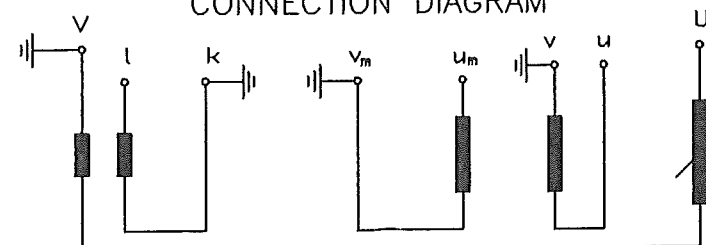
STEPLESSLY ADJUSTABLE PETERSEN COIL

TYPE	ZTC 250	SERIAL NUMBER	6213	IEC 289
		TOTAL WEIGHT t	2,20	ART.
				ESp
RATED VOLTAGE	kV 3,64	OIL WEIGHT t	0,57	YEAR OF PRODUCTION
				2005
FREQUENCY	Hz 50	REMOVABLE PART WEIGHT t	0,54	COOLING
				ONAN
RATED POWER	kVar 400	RATED CURRENT A	10-110	DUTY
				CONTINUOUS
RATED POWER	kVar -	RATED CURRENT A	-	DUTY
				2h
IMPEDANCE CONT. Ω	331-33,1	IMPEDANCE $_{2h} \Omega$	-	Um kV
				7,2
MOTOR DRIVE	kW 1,5	230V/400V AC		

SECONDARY WINDINGS

TERMINALS	VOLTAGE	CURRENT	POWER	DUTY
$u - v$ V	500 $\pm 10\%$	A 80	kVA 40	90s
$u_m - v_m$ V	100 $\pm 10\%$	A 10	VA 1000	DB
$k - l$	A 100/1	VA 30	ACCUR.CLASS	1FS5

CONNECTION DIAGRAM



U - V MAIN WINDING
u - v POWER AUXILIARY WINDING
u_h - v_h MEASURING AUXILIARY WINDING
k-1 CURRENT TRANSFORMER

				DATE	14.3.2005	US STEEL KOSICE 50. 3023 01 6,3 kV SUBSTATION T80		RATING PLATE	E500020					
				DRAWN	Gazda									
				VERIFIED	Marhal									
NR.	MODIFICATION		DATE	NAME		ORIGINAL	REPLACEMENT							