

Ausführungen für spezielle Anwendungen

Stromwandler RK...

Einteilige Kabelumbauwandler

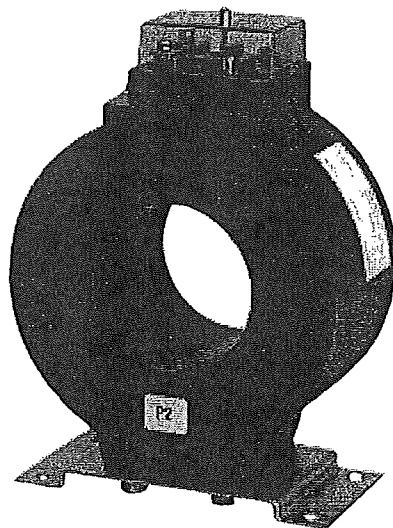
- Vollvergossene Ringkernstromwandler für Meß- und Schutzanwendungen
- Im Wandlerkörper befinden sich maximal 4 gleichmäßig bewickelte, weichmagnetische und hochpermeable Ringbandkerne
- Ausführungen nach DIN VDE 0414, IEC 185, ANSI, BS, AS; etc.
- Kompakte Bauform
- Erhältlich als Ausführung mit linearisiertem Übertragungsverhalten
- Design-in-Entwicklungen nach Kundenspezifikation und Anfrage
- Sekundärklemmenkasten mit einer plombierbaren Klarsicht-Abdeckkappe
- Einsatz auch oberhalb des Isolationspegels von $U_m = 0,72\text{kV}$, wenn anlagenseitiger Primärleiter vollisoliert ist (z.B. Kabel oder vollisolierte Schiene)

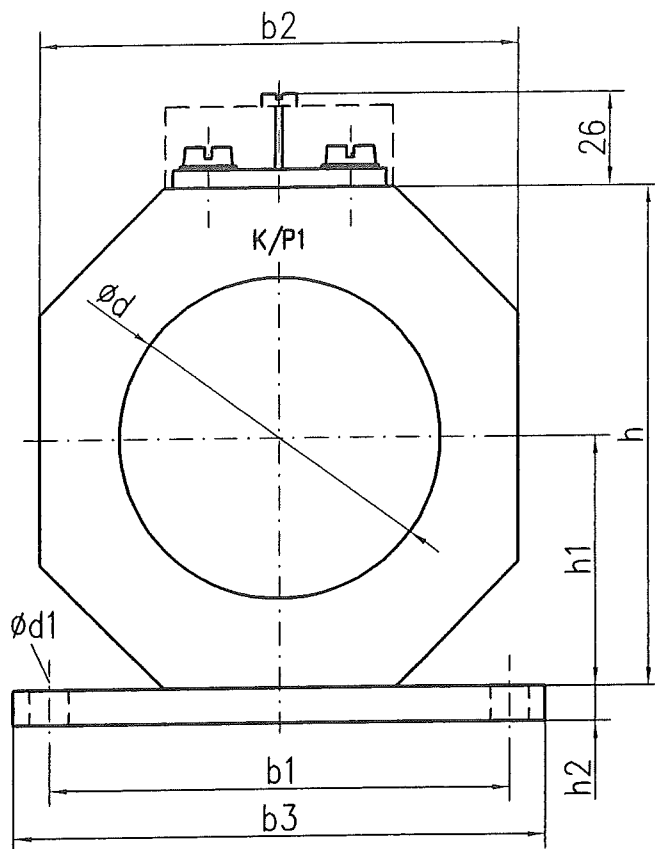
Instrument transformers for special applications

Current transformers RK...

Ringcore current transformers

- Fully casted ring-type current transformers for measuring and protection applications
- Maximum of 4 uniformly wound, soft magnetic and high permeable toroidal cores
- Design according to DIN VDE 0414, IEC 185; ANSI, BS, AS, etc.
- Compact design
- Available with linearized transmission characteristic
- Design-in-development according specification on request
- Secondary terminal box with a sealable transparent cap
- If the busbar systems or MV cables are sufficiently insulated, these ct's can be used for insulation levels higher than $U_m = 0,72\text{kV}$





RK 400/500
mit durchgehender
Grundplatte

RK 400/500
equipped with
one-piece base plate

RK 500/...	350	440	500	500	500	250	15	13	6 - 9
RK 400/...	290	370	400	400	400	200	10	11	3 - 9
RK 350/...	250	330	350	350	390	195	10	11	2 - 9
RK 300/...	210	280	300	300	340	170	10	11	2 - 9
RK 250/...	150	230	250	250	290	145	10	11	2 - 9
RK 200/...	140	180	200	200	235	118	10	11	1 - 9
RK 170/...	110	150	170	170	185	92,5	10	11	1 - 7
RK 150/...	110	130	150	150	170	85	10	11	1 - 5
RK 135/...	90	130	135	150	150	75	10	11	1 - 7
Typ/type	d.max	b1	b2	b3	h	h1	h2	d1	Größen/Sizes

9	300	270
8	270	240
7	240	210
6	210	180
5	180	150
4	150	120
3	120	90
2	90	60
1	60	30
Größen/Sizes	a1	a2

Weitergabe sowie Vervielfältigung dieser Unterlage,
Verwertung und Mitteilung ihres Inhalts nicht ge-
stattet, soweit nicht ausdrücklich zugestanden.
Zuwendungen verpflichten zu Schadensersatz.
Alle Rechte für den Fall der Patenterteilung oder
Gebrauchsmuster-Eintragung vorbehalten.

Freimaßtoleranz



Maßstab

1:2

RK b2/d

	Datum	Name
Bearb.	11.04.00	Kaplan
Gepr.		
Norm.		
Qual.		

Stromwandler RK.../...
Current transformer RK.../...

AEG KUW
AEG

210.763 565.MB

Blatt

Bl.

Zust. Änderung Datum Name

CAD-Zeichnung A4

Ers.f.:

Ers.d.:

Clamp-type cable current transformers K50, K80, K110

Characteristic features

Two-part, hinged split-tape wound core, held together by an internal taut band with tensioning device. Two-part light-alloy casing. The removable top portion is joined on each side by a screw to the base of the casing in which the core is fastened.

The insulation of the secondary winding to core and casing is tested with 2 kV.

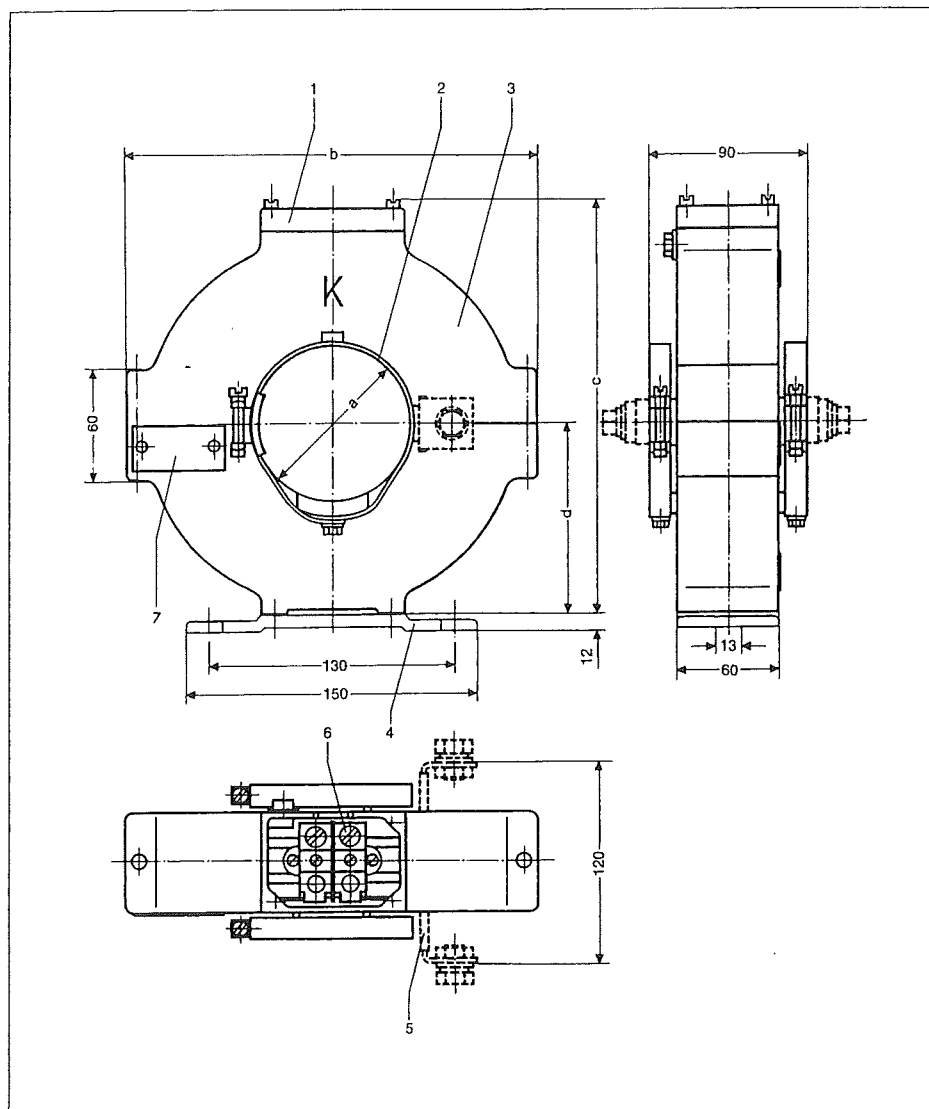
The primary conductor of the plant has to be fully insulated, therefore a classification with rated highest system voltage (U_m) is not possible.

Mounting facilities

Mounting around cable with a diameter of up to 115 mm without having to remove the cable-end box. Fastening on the cable by means of a cable attachment (taut strip). Fastening on walls and the like by means of a baseplate.

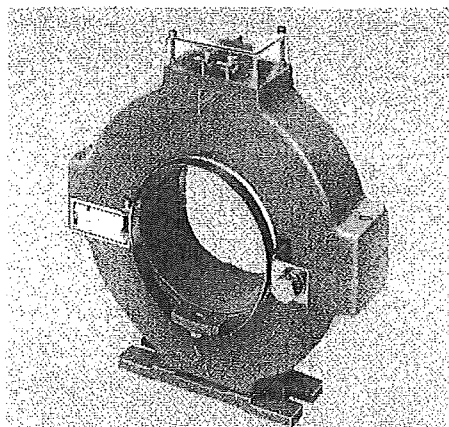
Application

- a) For measurement:
encircling of single-phase cables
- b) For earth-fault protection:
encircling of three-phase cables.
(Type K80s, K110s)



- 1 Transparent, sealable cover cap for the secondary terminals (included in the supply)
- 2 External taut strip with tensioning device for fastening the cable
- 3 Upper part of casing, removable after undoing 2 recessed hex.-headed screws M 5 (width of spanner 4 mm)
- 4 Baseplate with fastening slots for M 12 (to special order only)
- 5 Insulated earth return bar 25×3 mm with screw terminals M 10 (supplied for the earth-fault protective version only)
- 6 Secondary terminal screw M 6
- 7 Rating plate

Clamp-type cable current transformer Type K 110s
for cable with a max. dia of 115 mm



Type	a) ¹⁾ mm	b mm	c mm	d mm	Weight approx. kg
K50	55	185	195	82	3,1
K80, K80s	85	215	225	96	3,6
K110, K110s	115	245	260	112	5,2

¹⁾ greatest possible cable dia.