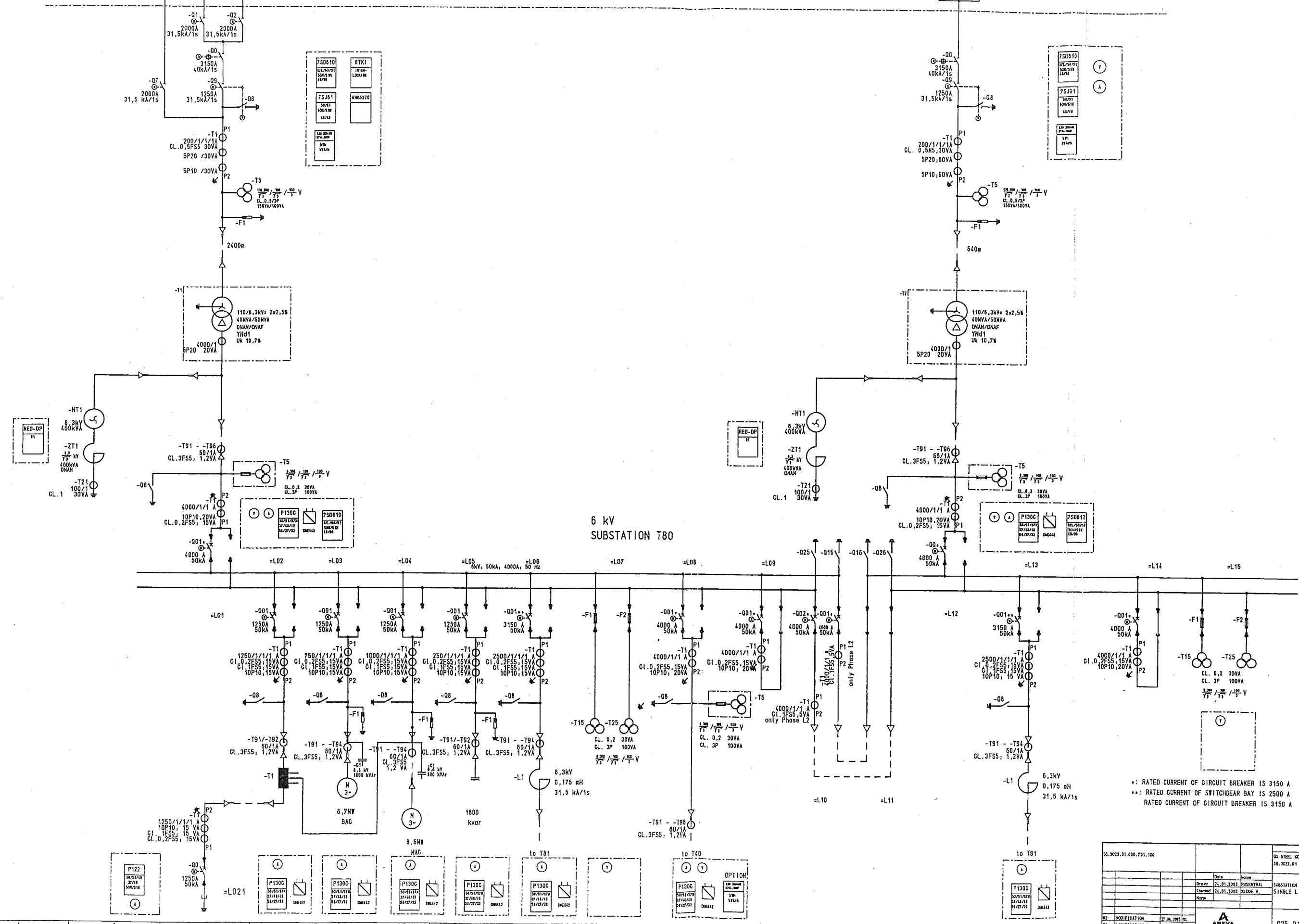


110kV
SUBSTATION T01
=E21

110kV
SUBSTATION T02
=E15

6 kV
SUBSTATION T80



..: RATED CURRENT OF CIRCUIT BREAKER IS 3150 A
 ...: RATED CURRENT OF SWITCHGEAR BAY IS 2500 A
 RATED CURRENT OF CIRCUIT BREAKER IS 3150 A

50.2023.01.000.701.100		US STEEL 2001/02	
		50.2023.01	
		SUBSTATION T01 / T02 / T80	
		SINGLE LINE DIAGRAM	
02: MODIFICATION		27.04.2023	
01: MODIFICATION		27.04.2023	
		025.011551-4000(0)	
		02	

