

US STEEL KOSICE/SLOVAKIA
50.3023.01
PROTECTION PANEL

CIRCUIT DIAGRAM

S = E21.ASR

/ A00

21.12.2006
H2011551
=E21.ASR
KRAMBECK
KLUGEH

025.011551- 5301 04

50.3023.01.000.701.xxx
COVERSHEET

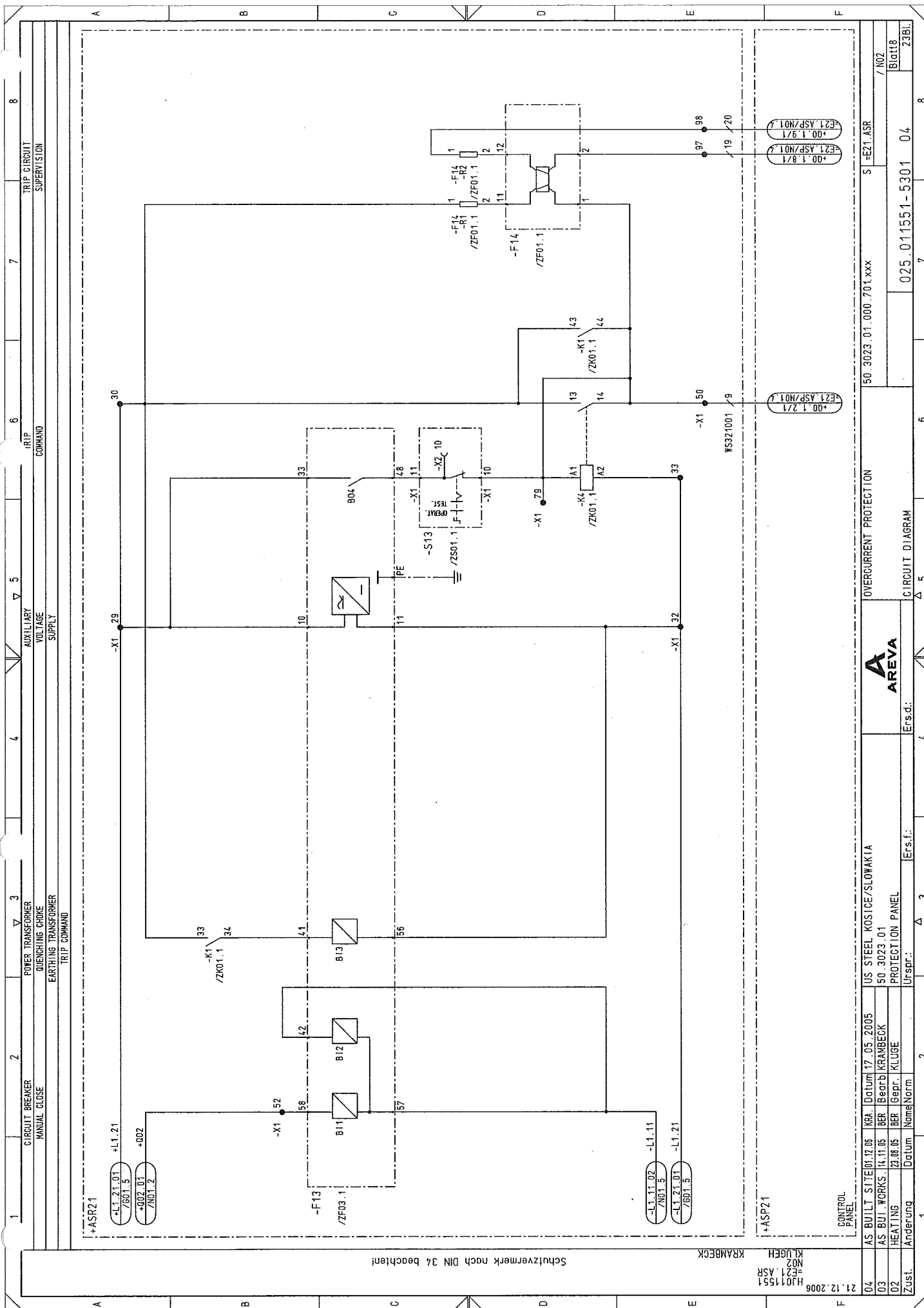
DATE :	17.05.2005
DRAWN :	KRAMBECK
CHECK.:	KLUGE
NORM.:	

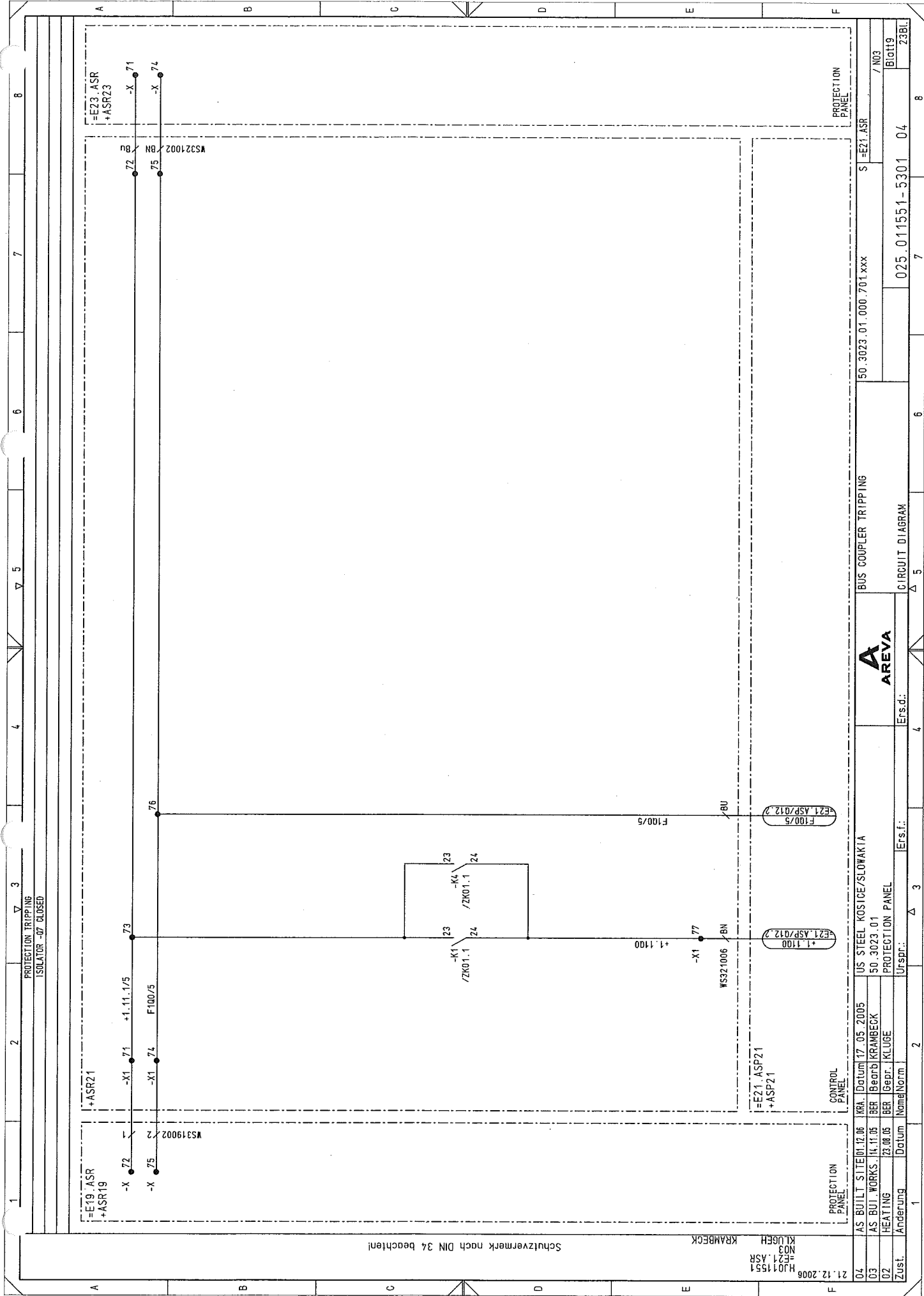
04 AS BUILT SITE	01.12.06	KRA.
03 AS BUI. WORKS.	14.11.05	BER
02 HEATING	23.08.05	BER
No. Revision	Date	Name

Schulzvermerk nach DIN 34 beachten!

21.12.2006
RUVK.80

1		2		3		4		5		6		7		8	
Auftraggeber- Unterlagennummer		Ersteller- Unterlagennummer		Änderungs- Zustand		Unterlagen-Kennzeichnung		Blatt		Benennung					
						Art Zugehörigkeit		Zählnummer							
A	50.3023.01.000.701 .xxx	50.3023.01.000.701 .xxx	025.011551-5301 04	02	03	S	=E21.ASR	A00	1	COVERSHEET	CIRCUIT DIAGRAM				
B	50.3023.01.000.701 .xxx	50.3023.01.000.701 .xxx	025.011551-5301 04	02	03	S	=E21.ASR	A11	3	TABLE OF CONTENTS	CIRCUIT DIAGRAM				
C	50.3023.01.000.701 .xxx	50.3023.01.000.701 .xxx	025.011551-5301 04	02	03	S	=E21.ASR	B01	4	SINGLE LINE DIAGRAM	CIRCUIT DIAGRAM				
D	50.3023.01.000.701 .xxx	50.3023.01.000.701 .xxx	025.011551-5301 04	02	03	S	=E21.ASR	D01	5	HEATING, SOCKET	230V AC CIRCUIT DIAGRAM				
E	50.3023.01.000.701 .xxx	50.3023.01.000.701 .xxx	025.011551-5301 04	02	03	S	=E21.ASR	G01	6	AUXILIARY VOLTAGE SUPPLY	220V DC CIRCUIT DIAGRAM				
F	50.3023.01.000.701 .xxx	50.3023.01.000.701 .xxx	025.011551-5301 04	02	03	S	=E21.ASR	G02	7	AUXILIARY VOLTAGE SUPPLY	220V DC CIRCUIT DIAGRAM				
	50.3023.01.000.701 .xxx	50.3023.01.000.701 .xxx	025.011551-5301 04	02	03	S	=E21.ASR	N01	8	DIFFERENTIAL PROTECTION	CIRCUIT DIAGRAM				
	50.3023.01.000.701 .xxx	50.3023.01.000.701 .xxx	025.011551-5301 04	02	03	S	=E21.ASR	N02	9	OVERCURRENT PROTECTION	CIRCUIT DIAGRAM				
	50.3023.01.000.701 .xxx	50.3023.01.000.701 .xxx	025.011551-5301 04	02	03	S	=E21.ASR	N03	10	BUS COUPLER TRIPPING	CIRCUIT DIAGRAM				
	50.3023.01.000.701 .xxx	50.3023.01.000.701 .xxx	025.011551-5301 04	02	03	S	=E21.ASR	R01	11	ALARM INDICATION	CIRCUIT DIAGRAM				
	50.3023.01.000.701 .xxx	50.3023.01.000.701 .xxx	025.011551-5301 04	02	03	S	=E21.ASR	R02	12	REMOTE ALARM INDICATION	CIRCUIT DIAGRAM				
	50.3023.01.000.701 .xxx	50.3023.01.000.701 .xxx	025.011551-5301 04	02	03	S	=E21.ASR	R03	13	MESSAGES	REMOTE CIRCUIT DIAGRAM				
	50.3023.01.000.701 .xxx	50.3023.01.000.701 .xxx	025.011551-5301 04	02	03	S	=E21.ASR	S01	14	CURRENT TRANSFORMER CIRCUITS	CIRCUIT DIAGRAM				
	50.3023.01.000.701 .xxx	50.3023.01.000.701 .xxx	025.011551-5301 04	02	03	S	=E21.ASR	S02	15	VOLTAGE TRANSFORMER CIRCUITS	CIRCUIT DIAGRAM				
	50.3023.01.000.701 .xxx	50.3023.01.000.701 .xxx	025.011551-5301 04	02	03	S	=E21.ASR	X01	16	SPARE TERMINALS	CIRCUIT DIAGRAM				
	50.3023.01.000.701 .xxx	50.3023.01.000.701 .xxx	025.011551-5301 04	02	03	S	=E21.ASR	ZA01	17	LIST OF ITEMS	CIRCUIT DIAGRAM				
	50.3023.01.000.701 .xxx	50.3023.01.000.701 .xxx	025.011551-5301 04	02	03	S	=E21.ASR	ZF01	18	LIST OF ITEMS	CIRCUIT DIAGRAM				
	50.3023.01.000.701 .xxx	50.3023.01.000.701 .xxx	025.011551-5301 04	02	03	S	=E21.ASR	ZF02	19	LIST OF ITEMS	CIRCUIT DIAGRAM				
	50.3023.01.000.701 .xxx	50.3023.01.000.701 .xxx	025.011551-5301 04	02	03	S	=E21.ASR	ZF03	20	LIST OF ITEMS	CIRCUIT DIAGRAM				
	50.3023.01.000.701 .xxx	50.3023.01.000.701 .xxx	025.011551-5301 04	02	03	S	=E21.ASR	ZX01	21	LIST OF ITEMS	CIRCUIT DIAGRAM				
	50.3023.01.000.701 .xxx	50.3023.01.000.701 .xxx	025.011551-5301 04	02	03	S	=E21.ASR	ZR01	22	LIST OF ITEMS	CIRCUIT DIAGRAM				
	50.3023.01.000.701 .xxx	50.3023.01.000.701 .xxx	025.011551-5301 04	02	03	S	=E21.ASR	ZS01	23	LIST OF ITEMS	CIRCUIT DIAGRAM				
	50.3023.01.000.701 .xxx	50.3023.01.000.701 .xxx	025.011551-5301 04	02	03	S	=E21.ASR	ZX01							





Schutzvermerk nach DIN 34 beachten!

KLUGE
H401551
E21 ASR
N03

KRAMBECK

04	AS BUILT SITE	01.12.06	KRA	Datum	12.05.2005	US STEEL KOSICE/SLOWAKIA
03	AS BUILT WORKS	14.11.05	BER	Bepr.	50.3023.01	PROTECTION PANEL
02	HEATING	23.08.05	BER	Gepr.	KLUGE	PROTECTION PANEL
Zust.	Änderung	Datum	Norm	Urspr.	Ersd.	Ersd.



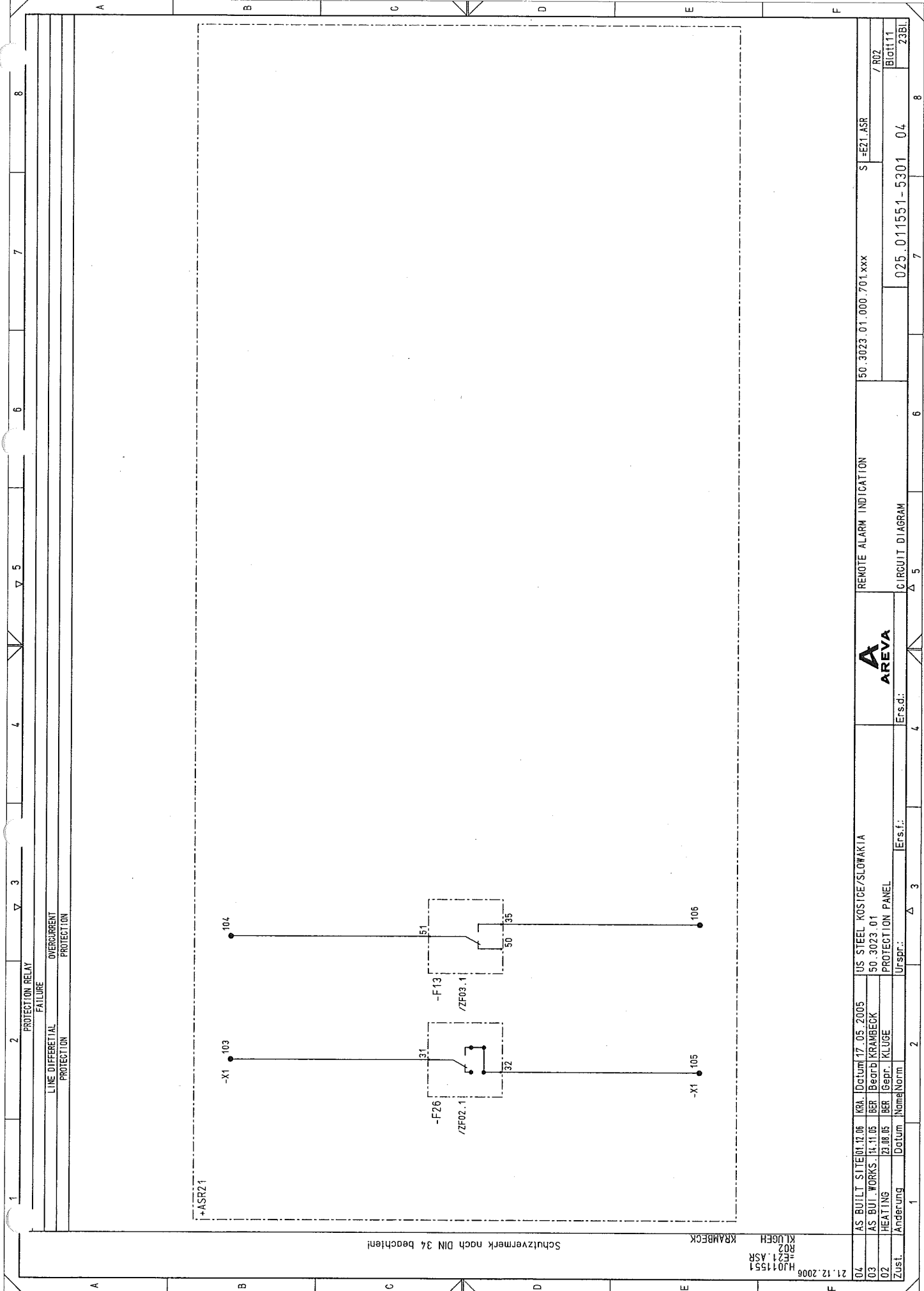
BUS COUPLER TRIPPING

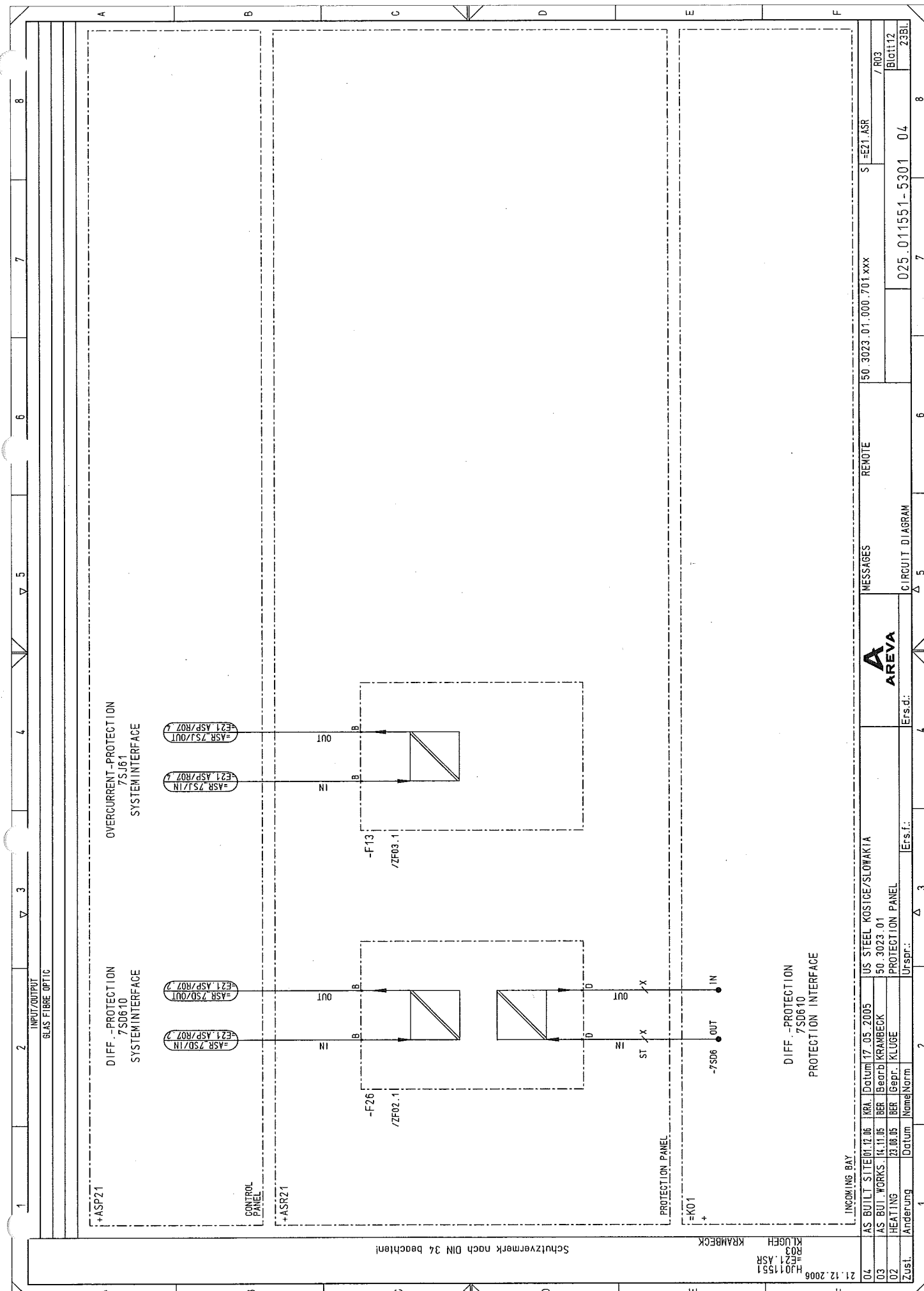
50.3023.01.000.701.xxx

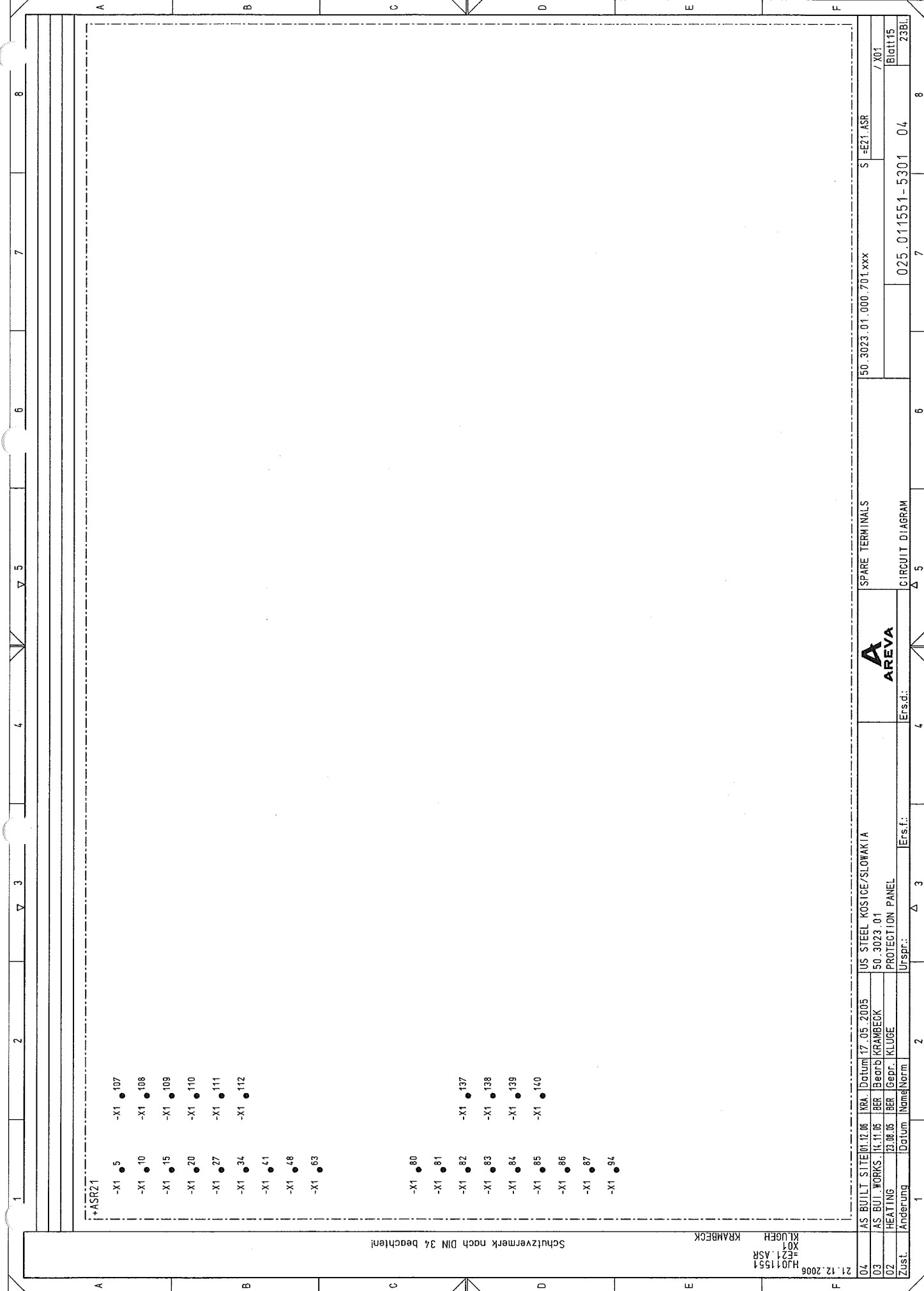
S-E21 ASR

025.011551-5301 04

23BL







Schutzvermerk nach DIN 34 beachten!

KRAMBECK
KLUGE
X01

HJ011551
-E21 ASR
21.12.2006

04	AS BUILT SITE	12.06	KRA.	Datum	17.05.2005	US STEEL KOSICE/SLOVAKIA	SPARE TERMINALS	50.3023.01.000.701.xxx	S-E21 ASR	/ X01
03	AS BUILT WORKS	11.11.05	BER	Bearb	KRAMBECK	50.3023.01				
02	HEATING	23.08.05	BER	Gepr.	KLUGE	PROTECTION PANEL				
Zust.	Änderung	Datum	Name	Norm	Urspr.:	Ers.f.:	Ers.d.:	025.011551-5301	04	238L



CIRCUIT DIAGRAM

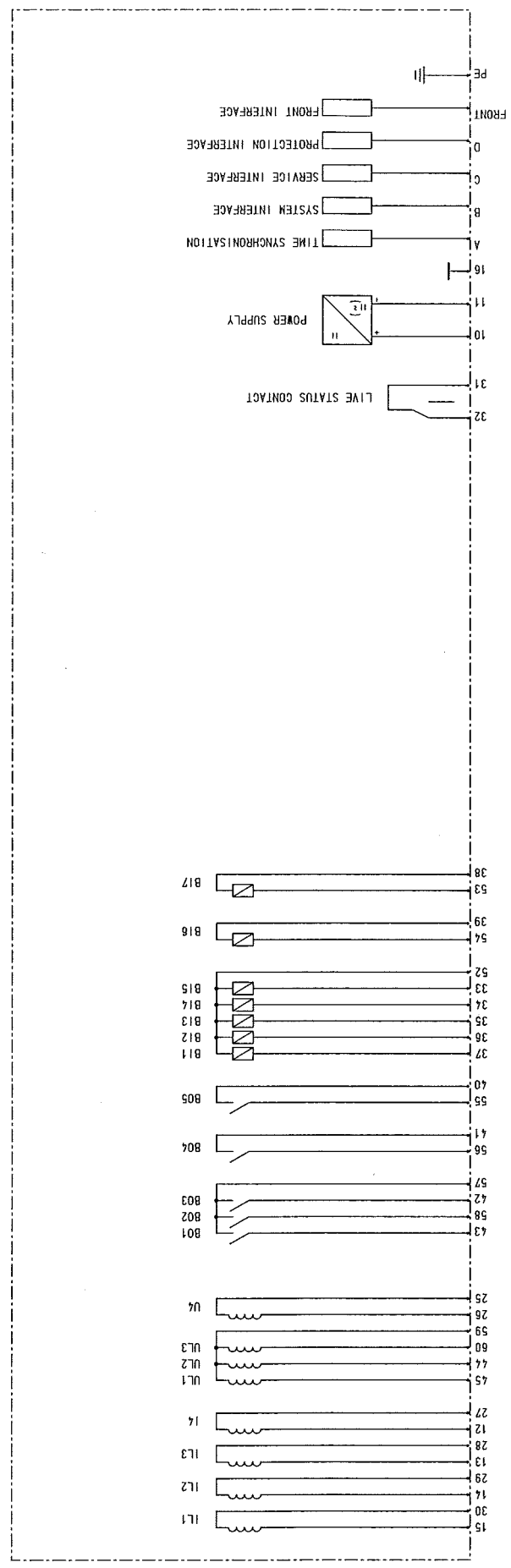
04	AS BUILT SITE	01.12.06	KR.	Datum	17.05.2005	US STEEL KOSICE/SLOWAKIA	 AREVA	LIST OF ITEMS		50_3023_01_000_701.xxx		S	E21	ASR		
03	AS BUI. WORKS	11.11.05	BER	Beorbi	KRAMBECK	50_3023_01									/ ZA01	
02	HEATING	23.08.05	BER	gepr.	KLUBE	PROTECTION PANEL									Blatt 16	
Zust.	Aenderung	Datum	Name	Norm	Urspr.:	Ers.f.:	Ers.d.:	CIRCUIT DIAGRAM		025_011551-5301		04		23 Bl.		

Schutzvermerk nach DIN 34 beachten!

KLÜBEGH
Z02
HJ011551
F02
E21 ASR

KRAMBECK

1	1	1	2	3	4	5	6	7	8
SCHUTZRELAIS PROTECTION RELAY		Manuf.: SIEMENS		Type: 7SD610		Technical components		Ordering number	
DIFFERENTIALSCHUTZ DIFFERENTIAL PROT.		Ord. No.: 7SD6101-SFB39-0BNO		AUFBAU 1/3 19" DOPPELSTOCKKLEMMEN SURFACE MOUNTING 1/3 19" 2-TIER TERMINAL					
NOMINALE CURRENT NOMINAL CURRENT		: 1A		HILFSPANNUNG AUX. VOLTAGE		: 110-250V DC/115V AC			
Application		Settings		Location		Item designation			



DIFF. - PROTECTION									
/S01.2	/S01.2	/S01.2	/S01.2	/S01.2	/S01.2	/S01.2	/S01.2	/S01.2	/S01.2
/S01.3	/S01.3	/S01.3	/S01.3	/S01.3	/S01.3	/S01.3	/S01.3	/S01.3	/S01.3
/S02.2	/S02.2	/S02.2	/S02.2	/S02.2	/S02.2	/S02.2	/S02.2	/S02.2	/S02.2
/S02.3	/S02.3	/S02.3	/S02.3	/S02.3	/S02.3	/S02.3	/S02.3	/S02.3	/S02.3
+ASR21									
/R01.6	/R01.6	/R01.6	/R01.6	/R01.6	/R01.6	/R01.6	/R01.6	/R01.6	/R01.6
/R01.7	/R01.7	/R01.7	/R01.7	/R01.7	/R01.7	/R01.7	/R01.7	/R01.7	/R01.7
/N01.6	/N01.6	/N01.6	/N01.6	/N01.6	/N01.6	/N01.6	/N01.6	/N01.6	/N01.6
-P26									
/N01.2	/N01.2	/N01.2	/N01.2	/N01.2	/N01.2	/N01.2	/N01.2	/N01.2	/N01.2
/N01.3	/N01.3	/N01.3	/N01.3	/N01.3	/N01.3	/N01.3	/N01.3	/N01.3	/N01.3
/N01.4	/N01.4	/N01.4	/N01.4	/N01.4	/N01.4	/N01.4	/N01.4	/N01.4	/N01.4
/R02.2	/R02.2	/R02.2	/R02.2	/R02.2	/R02.2	/R02.2	/R02.2	/R02.2	/R02.2
/R03.2	/R03.2	/R03.2	/R03.2	/R03.2	/R03.2	/R03.2	/R03.2	/R03.2	/R03.2
/N01.5	/N01.5	/N01.5	/N01.5	/N01.5	/N01.5	/N01.5	/N01.5	/N01.5	/N01.5
FRONT									
PE	PE	PE	PE	PE	PE	PE	PE	PE	PE

1	2	3	4	5	6	7	8
AS BUILT SITE	12.05	KRA.	Datum	17.05.2005	US STEEL KOSICE/SLOVAKIA	LIST OF ITEMS	
AS BUI. WORKS	14.11.05	BER	Beauf.	KRAMBECK	50.3023.01	S=E21 ASR	
HEATING	23.08.05	BER	Gepr.	KLUGE	PROTECTION PANEL	Biot118	
Änderung	Datum	Name	Norm	Urspr.:	Ersd.:	Biot118	
04	21.12.2006	HJ011551	F02	E21 ASR	50.3023.01.000.701.xxx	025.011551-5301 04	
03	AS BUI. WORKS	14.11.05	BER	Beauf.	KRAMBECK	CIRCUIT DIAGRAM	
02	HEATING	23.08.05	BER	Gepr.	KLUGE	025.011551-5301 04	
Zust.	Änderung	Datum	Name	Norm	Urspr.:	23BL	

4	AS BUILT SITE	11.12.06	KRA	Datum	17.05.2005	US STEEL KOSICE/SLOVAKIA		LIST OF ITEMS	50_3023_01_000_701.xxx	S	E21 ASR
3	AS BUL. WORKS	11.11.05	BER	Beorib	KRAMBECK	50_3023_01					
2	HEATING	23.08.05	BER	Gepr.	KLUGE	PROTECTION PANEL					
ust.	Andering	Datum	Name	Norm							
						Usprr.:	Ers.f.:	Ers.d.:	025_011551-5301	04	23 Bl.
								CIRCUIT DIAGRAM			
Blatt 21											
/ ZR01											

1	2	3	4	5	6	7	8
STECKDOOSE SOCKET AUFBAU MOUNTING ANZAHL ANSCHLUESSE NUMBER OF PINS Technische Komponenten pro Gerät		Herst. : GE POWER CONTROLS Best.Nr. : 666499 Typ: WSOSE NEUSTRON NOMINAL CURRENT : 16A 250VAC Typ	<div> <div>Y L</div> <div>Y N</div> <div>Y PE</div> </div>				
Verwendungszweck SOCKET		Einstell Daten *ASR21	Einbauport *ASR21	BTH-Kennzeichen -X101			
<div> <div>50.3023.01.000.701.xxx</div> <div>50.3023.01.000.701.xxx</div> </div>							
AS BUILT SITE 01.12.06 AS BUILT WORKS 14.11.06 HEATING 23.08.06		KRA. 17.05.2005 BER Beord KRAMBECK BER Gepr. KLUGE	US STEEL KOSICE/SLOVAKIA 50.3023.01 PROTECTION PANEL		LIST OF ITEMS S -E21.ASR /ZX01		
Zust. Änderung	Datum Norm	Urspr.:	Ers.f.:	Ers.d.:	CIRCUIT DIAGRAM 025.011551-5301 04 23 BL		